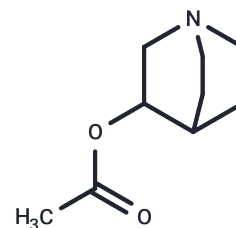


## Aceclidine

## Chemical Properties

CAS No. :	827-61-2
Formula:	C <sub>9</sub> H <sub>15</sub> NO <sub>2</sub>
Molecular Weight:	169.22
Storage:	Powder: -20°C for 3 years   In solvent: -80°C for 1 year Actual storage temperature shall be subject to the COA.



## Biological Description

Description	Aceclidine (1-azabicyclo[2.2.2]octan-3-yl acetate) is a modulator of M3 mAChR and can be used in studies about treating glaucoma by reducing intraocular pressure.
Targets(IC50)	AChR

## Solubility Information

Solubility	H <sub>2</sub> O: 10 mg/mL (59.09 mM), Sonication is recommended. DMSO: Soluble, (< 1 mg/ml refers to the product slightly soluble or insoluble)
------------	--

## Preparing Stock Solutions

	1mg	5mg	10mg
1 mM	5.9095 mL	29.5473 mL	59.0947 mL
5 mM	1.1819 mL	5.9095 mL	11.8189 mL
10 mM	0.5909 mL	2.9547 mL	5.9095 mL
50 mM	0.1182 mL	0.5909 mL	1.1819 mL

Please select the appropriate solvent to prepare the stock solution, according to the solubility of the product in different solvents. Please use it as soon as possible.

Note: The dilution table applies only to solid products. For liquid products, please calculate the stock solution based on the stated concentration and/or density.

Reference

Ehlert FJ, Griffin MT, Glidden PF. The interaction of the enantiomers of aceclidine with subtypes of the muscarinic receptor. *J Pharmacol Exp Ther.* 1996 Dec;279(3):1335-44.

Zhu L, et al. Aceclidine and pilocarpine interact differently with muscarinic receptor in isolated rabbit iris muscle. *Life Sci.* 2006 Feb 28;78(14):1617-23. Epub 2005 Oct 17.

Hubbard WC, Kee C, Kaufman PL. Aceclidine effects on outflow facility after ciliary muscle disinsertion. *Ophthalmologica.* 1996;210(5):303-7.

Canovetti A, et al. Aceclidine, brimonidine tartrate, and dapiprazole: comparison of miotic effect and tolerability under different lighting conditions. *J Cataract Refract Surg.* 2009 Jan;35(1):42-6.

**Inhibitor · Natural Compounds · Compound Libraries · Recombinant Proteins**

This product is for Research Use Only · Not for Human or Veterinary or Therapeutic Use

Tel:781-999-4286 E\_mail:info@targetmol.com Address:34 Washington Street,Wellesley Hills,MA 02481