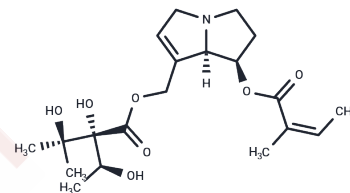


Echimidine

Chemical Properties

CAS No. :	520-68-3
Formula:	C ₂₀ H ₃₁ N ₇ O
Molecular Weight:	397.46
Storage:	Store under nitrogen Powder: -20°C for 3 years In solvent: -80°C for 1 year <small>Actual storage temperature shall be subject to the COA.</small>



Biological Description

Description	Echimidine ((+)-Echimidine) is a natural pyrrolizidine alkaloid and direct AChE inhibitor that also has binding activity to muscarinic receptors and 5-HT ₂ , and can be used to study Alzheimer's disease.
Targets(IC50)	Others,Antifection
In vivo	Zebrafish embryos were exposed to different concentrations of Echimidine (0.02, 0.2, and 2 mg/L), and changes in the total distance traveled, average swimming speed, activity, and total movement time of the zebrafish larvae were observed. The Results showed that at the highest concentration, the total distance traveled and average swimming speed increased by 39.79% and 39.76%, respectively. Echimidine inhibited acetylcholinesterase (AChE) activity, impaired the neural development of zebrafish embryos, and induced hyperactivity in the zebrafish larvae [1].

Preparing Stock Solutions

	1mg	5mg	10mg
1 mM	2.516 mL	12.5799 mL	25.1598 mL
5 mM	0.5032 mL	2.516 mL	5.032 mL
10 mM	0.2516 mL	1.258 mL	2.516 mL
50 mM	0.0503 mL	0.2516 mL	0.5032 mL

Please select the appropriate solvent to prepare the stock solution, according to the solubility of the product in different solvents. Please use it as soon as possible.

Note: The dilution table applies only to solid products. For liquid products, please calculate the stock solution based on the stated concentration and/or density.

Reference

Shen C, et al. Developmental exposure to mepanipyrim induces locomotor hyperactivity in zebrafish (*Danio rerio*) larvae. *Chemosphere*. 2020 Oct; 256:127106.

Inhibitor · Natural Compounds · Compound Libraries · Recombinant Proteins

This product is for Research Use Only · Not for Human or Veterinary or Therapeutic Use

Tel: 781-999-4286 E_mail: info@targetmol.com Address: 34 Washington Street, Wellesley Hills, MA 02481