

SXC 2023

Chemical Properties

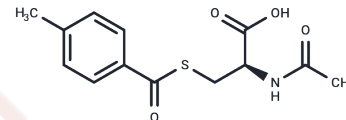
CAS No. : 1695562-36-7

Formula: C₁₃H₁₅NO₄S

Molecular Weight: 281.33

Storage: Powder: -20°C for 3 years | In solvent: -80°C for 1 year

Actual storage temperature shall be subject to the COA.



Biological Description

Description	SXC 2023 ((S)-2-acetamido-3-(4-methylbenzoylthio)propanoic acid) is a therapeutic prodrug of N-acetyl-L-cysteine for the treatment of CNS disorders and neurocognitive disorders, and can be used to treat glutamatergic dysfunction and psychiatric disorders in which oxidative stress plays a key role.
Targets(IC50)	Others

Solubility Information

Solubility	DMSO: 55 mg/mL (195.5 mM), Sonication is recommended. (< 1 mg/ml refers to the product slightly soluble or insoluble)
------------	--------------------------------------------------------------------------------------------------------------------------

Preparing Stock Solutions

	1mg	5mg	10mg
1 mM	3.5545 mL	17.7727 mL	35.5454 mL
5 mM	0.7109 mL	3.5545 mL	7.1091 mL
10 mM	0.3555 mL	1.7773 mL	3.5545 mL
50 mM	0.0711 mL	0.3555 mL	0.7109 mL

Please select the appropriate solvent to prepare the stock solution, according to the solubility of the product in different solvents. Please use it as soon as possible.

Note: The dilution table applies only to solid products. For liquid products, please calculate the stock solution based on the stated concentration and/or density.

Reference

- Angerer J, et al. Gas chromatographic method for the simultaneous determination of S-p-toluymercapturic acid and S-phenylmercapturic acid in human urine. J Anal Toxicol. 1998;22(3):211-214.
- Angerer J, et al. S-p-toluymercapturic acid in the urine of workers exposed to toluene: a new biomarker for toluene exposure. Arch Toxicol. 1998;72(2):119-123.

Inhibitor · Natural Compounds · Compound Libraries · Recombinant Proteins

This product is for Research Use Only · Not for Human or Veterinary or Therapeutic Use

Tel:781-999-4286 E_mail:info@targetmol.com Address:34 Washington Street,Wellesley Hills,MA 02481