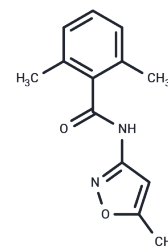


## Soretolide

## Chemical Properties

CAS No. :	130403-08-6
Formula:	C <sub>13</sub> H <sub>14</sub> N <sub>2</sub> O <sub>2</sub>
Molecular Weight:	230.26
Storage:	Powder: -20°C for 3 years   In solvent: -80°C for 1 year Actual storage temperature shall be subject to the COA.



## Biological Description

Description	Soretolide (D2916) is a small molecule compound that is used to treat epilepsy.
Targets(IC50)	Others

## Solubility Information

Solubility	DMSO: 60 mg/mL (260.58 mM),Sonication is recommended. (< 1 mg/ml refers to the product slightly soluble or insoluble)
------------	--

## Preparing Stock Solutions

	1mg	5mg	10mg
1 mM	4.3429 mL	21.7146 mL	43.4292 mL
5 mM	0.8686 mL	4.3429 mL	8.6858 mL
10 mM	0.4343 mL	2.1715 mL	4.3429 mL
50 mM	0.0869 mL	0.4343 mL	0.8686 mL

Please select the appropriate solvent to prepare the stock solution, according to the solubility of the product in different solvents. Please use it as soon as possible.

Note: The dilution table applies only to solid products. For liquid products, please calculate the stock solution based on the stated concentration and/or density.

## Reference

Bialer M, et al. Progress report on new antiepileptic drugs: a summary of the fourth Eilat conference (EILAT IV). *Epilepsy Res.* 1999 Mar;34(1):1-41.

**Inhibitor · Natural Compounds · Compound Libraries · Recombinant Proteins**

This product is for Research Use Only · Not for Human or Veterinary or Therapeutic Use

Tel:781-999-4286 E\_mail:info@targetmol.com Address:34 Washington Street,Wellesley Hills,MA 02481