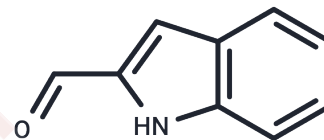


Indole-2-carboxaldehyde

Chemical Properties

CAS No. :	19005-93-7
Formula:	C ₉ H ₇ NO
Molecular Weight:	145.16
Storage:	Keep away from moisture Powder: -20°C for 3 years In solvent: -80°C for 1 year <small>Actual storage temperature shall be subject to the COA.</small>



Biological Description

Description	Indole-2-carboxaldehyde is a classic synthetic intermediate for indole heterocycles and can be used in the synthesis of indole alkaloids, pharmaceutical molecules, pesticides, fluorescent probes, and other compounds. Indole-2-carboxaldehyde inhibits hCYP2A6, with an IC ₅₀ value of 1.8 μM.
Targets(IC50)	Cytochromes P450

Solubility Information

Solubility	DMSO: 80.00 mg/mL (551.12 mM), Sonication is recommended. (< 1 mg/ml refers to the product slightly soluble or insoluble)
------------	--

Preparing Stock Solutions

	1mg	5mg	10mg
1 mM	6.889 mL	34.4448 mL	68.8895 mL
5 mM	1.3778 mL	6.889 mL	13.7779 mL
10 mM	0.6889 mL	3.4445 mL	6.889 mL
50 mM	0.1378 mL	0.6889 mL	1.3778 mL

Please select the appropriate solvent to prepare the stock solution, according to the solubility of the product in different solvents. Please use it as soon as possible.

Note: The dilution table applies only to solid products. For liquid products, please calculate the stock solution based on the stated concentration and/or density.

Reference

Tani N, et al. Rational design of novel CYP2A6 inhibitors. *Bioorg Med Chem.* 2014;22(23):6655-6664.

Fang Z, et al. A new uridine derivative and a new indole derivative from the coral-associated actinomycete *Pseudonocardia* sp. SCSIO 11457. *Nat Prod Res.* 2021 Jan;35(2):188-194.

Use of indole compounds for fat reduction and skin and soft tissue tightening. World Intellectual Property Organization, WO2014143125 A1 2014-09-18.

Inhibitor · Natural Compounds · Compound Libraries · Recombinant Proteins

This product is for Research Use Only · Not for Human or Veterinary or Therapeutic Use

Tel:781-999-4286 E_mail:info@targetmol.com Address:34 Washington Street,Wellesley Hills,MA 02481