

D-Melibiose

Chemical Properties

CAS No. : 585-99-9

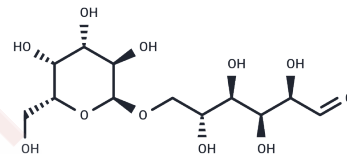
Formula: C₁₂H₂₂O₁₁

Molecular Weight: 342.30

Keep away from direct sunlight

Storage: Powder: -20°C for 3 years | In solvent: -80°C for 1 year

Actual storage temperature shall be subject to the COA.



Biological Description

Description	D-Melibiose (Galalpha1-6Glcbeta) is a reducing disaccharide formed by an alpha-1, 6 linkage between galactose and glucose (D-Gal- α (1 \rightarrow 6)-D-Glc).
Targets(IC50)	Endogenous Metabolite

Solubility Information

Solubility	DMSO: 62.5 mg/mL (182.59 mM),Sonication is recommended. (< 1 mg/ml refers to the product slightly soluble or insoluble)
In vivo Formulation	10% DMSO+40% PEG300+5% Tween 80+45% Saline: 2 mg/mL (5.84 mM),Sonication is recommended. <i>Please add the solvents sequentially, clarifying the solution as much as possible before adding the next one. Dissolve by heating and/or sonication if necessary. Working solution is recommended to be prepared and used immediately. The formulation provided above is for reference purposes only. In vivo formulations may vary and should be modified based on specific experimental conditions.</i>

Preparing Stock Solutions

	1mg	5mg	10mg
1 mM	2.9214 mL	14.6071 mL	29.2141 mL
5 mM	0.5843 mL	2.9214 mL	5.8428 mL
10 mM	0.2921 mL	1.4607 mL	2.9214 mL
50 mM	0.0584 mL	0.2921 mL	0.5843 mL

Please select the appropriate solvent to prepare the stock solution, according to the solubility of the product in different solvents. Please use it as soon as possible.

Note: The dilution table applies only to solid products. For liquid products, please calculate the stock solution based on the stated concentration and/or density.

Reference

Hariharan P, Guan L. J Biol Chem. 2014 Nov 21;289(47):33012-9.

Gao Z, Li L, Chen W, et al. Distinguishment of Glycan Isomers by Trapped Ion Mobility Spectrometry. Analytical Chemistry. 2021, 93(26): 9209-9217.

Gao Z, He Y, He Q, et al. Multidimensional identification of disaccharide isomers based on non-covalent complexes and tandem mass spectrometry. Talanta. 2022: 123674

Inhibitor · Natural Compounds · Compound Libraries · Recombinant Proteins

This product is for Research Use Only· Not for Human or Veterinary or Therapeutic Use

Tel:781-999-4286 E_mail:info@targetmol.com Address:34 Washington Street,Wellesley Hills,MA 02481