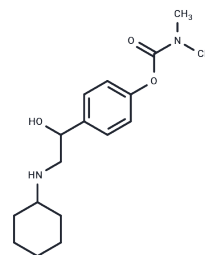


AChE/BChE-IN-5

Chemical Properties

CAS No. :	2410992-68-4
Formula:	C17H26N2O3
Molecular Weight:	306.4
Storage:	Powder: -20°C for 3 years In solvent: -80°C for 1 year Actual storage temperature shall be subject to the COA.



Biological Description

Description	AChE/BChE-IN-5 (BMC-16) is a dual inhibitor of AChE and BChE that can cross the BBB, with IC50 values of 266 nM for human AChE (hAChE) and 10.6 nM for human BChE (hBChE) [1].
Targets(IC50)	Others,Cholinesterase (ChE)

Preparing Stock Solutions

	1mg	5mg	10mg
1 mM	3.2637 mL	16.3185 mL	32.6371 mL
5 mM	0.6527 mL	3.2637 mL	6.5274 mL
10 mM	0.3264 mL	1.6319 mL	3.2637 mL
50 mM	0.0653 mL	0.3264 mL	0.6527 mL

Please select the appropriate solvent to prepare the stock solution, according to the solubility of the product in different solvents. Please use it as soon as possible.

Note: The dilution table applies only to solid products. For liquid products, please calculate the stock solution based on the stated concentration and/or density.

Inhibitor · Natural Compounds · Compound Libraries · Recombinant Proteins

This product is for Research Use Only · Not for Human or Veterinary or Therapeutic Use

Tel:781-999-4286 E_mail:info@targetmol.com Address:34 Washington Street,Wellesley Hills,MA 02481