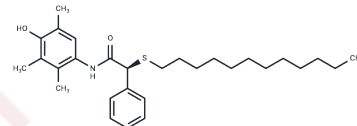


## Eflucimibe

## Chemical Properties

CAS No. :	202340-45-2
Formula:	C <sub>29</sub> H <sub>43</sub> NO <sub>2</sub> S
Molecular Weight:	469.72
Storage:	Powder: -20°C for 3 years   In solvent: -80°C for 1 year Actual storage temperature shall be subject to the COA.



## Biological Description

Description	Eflucimibe (L0081) is an acyl coenzyme A: cholesterol acyltransferase inhibitor for the treatment of cardiovascular disease and endocrine and metabolic disorders, and can be used to study atherosclerosis and hyperlipidemia.
Targets(IC50)	Acyltransferase

## Solubility Information

Solubility	DMSO: 15 mg/mL (31.93 mM), Sonication is recommended. (< 1 mg/ml refers to the product slightly soluble or insoluble)
In vivo Formulation	10% DMSO+90% Corn Oil: 1.5 mg/mL (3.19 mM), Sonication is recommended. <i>Please add the solvents sequentially, clarifying the solution as much as possible before adding the next one. Dissolve by heating and/or sonication if necessary. Working solution is recommended to be prepared and used immediately. The formulation provided above is for reference purposes only. In vivo formulations may vary and should be modified based on specific experimental conditions.</i>

## Preparing Stock Solutions

	1mg	5mg	10mg
1 mM	2.1289 mL	10.6446 mL	21.2893 mL
5 mM	0.4258 mL	2.1289 mL	4.2579 mL
10 mM	0.2129 mL	1.0645 mL	2.1289 mL
50 mM	0.0426 mL	0.2129 mL	0.4258 mL

Please select the appropriate solvent to prepare the stock solution, according to the solubility of the product in different solvents. Please use it as soon as possible.

Note: The dilution table applies only to solid products. For liquid products, please calculate the stock solution based on the stated concentration and/or density.

Reference

Mesplet N, et al. Spectrofluorimetric study of eflucimibe-gamma-cyclodextrin inclusion complex. Eur J Pharm Biopharm. 2005;59(3):523-526.

Rodier E, et al. A three step supercritical process to improve the dissolution rate of eflucimibe. Eur J Pharm Sci. 2005;26(2):184-193.

**Inhibitor · Natural Compounds · Compound Libraries · Recombinant Proteins**

This product is for Research Use Only· Not for Human or Veterinary or Therapeutic Use

Tel:781-999-4286 E\_mail:info@targetmol.com Address:34 Washington Street,Wellesley Hills,MA 02481