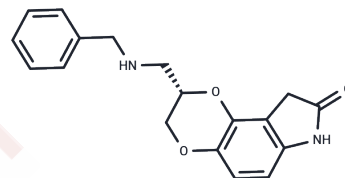


Aplindore

Chemical Properties

| | |
|-------------------|---|
| CAS No. : | 189681-70-7 |
| Formula: | C ₁₈ H ₁₈ N ₂ O ₃ |
| Molecular Weight: | 310.35 |
| Storage: | Powder: -20°C for 3 years In solvent: -80°C for 1 year Actual storage temperature shall be subject to the COA. |



Biological Description

| | |
|---------------|--|
| Description | Aplindore is a dopamine receptor agonist used in the therapeutic treatment of Parkinson's Disease. |
| Targets(IC50) | Others,Dopamine Receptor |

Preparing Stock Solutions

| | 1mg | 5mg | 10mg |
|-------|-----------|------------|------------|
| 1 mM | 3.2222 mL | 16.1108 mL | 32.2217 mL |
| 5 mM | 0.6444 mL | 3.2222 mL | 6.4443 mL |
| 10 mM | 0.3222 mL | 1.6111 mL | 3.2222 mL |
| 50 mM | 0.0644 mL | 0.3222 mL | 0.6444 mL |

Please select the appropriate solvent to prepare the stock solution, according to the solubility of the product in different solvents. Please use it as soon as possible.

Note: The dilution table applies only to solid products. For liquid products, please calculate the stock solution based on the stated concentration and/or density.

Inhibitor · Natural Compounds · Compound Libraries · Recombinant Proteins

This product is for Research Use Only · Not for Human or Veterinary or Therapeutic Use

Tel:781-999-4286 E_mail:info@targetmol.com Address:34 Washington Street,Wellesley Hills,MA 02481