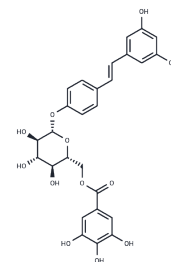


## Resveratrol 4'-(6-galloylglucoside)

## Chemical Properties

CAS No. :	64898-03-9
Formula:	C <sub>27</sub> H <sub>26</sub> O <sub>12</sub>
Molecular Weight:	542.49
Storage:	Store at low temperature Powder: -20°C for 3 years   In solvent: -80°C for 1 year <small>Actual storage temperature shall be subject to the COA.</small>



## Biological Description

Description	Resveratrol 4'-(6-galloylglucoside) (Resveratrol-4'-O-(6"-galloyl)glucoside) is a natural product found in the roots of rhubarb ( <i>Rheum palmatum</i> L.).
Targets(IC50)	Others
In vitro	Resveratrol 4'-(6-galloylglucoside) inhibits recombinant rat squalene epoxidase with IC50 of 3.6 μM[1].

## Solubility Information

Solubility	DMSO: 55 mg/mL (101.38 mM),Sonication is recommended. (< 1 mg/ml refers to the product slightly soluble or insoluble)
------------	--

## Preparing Stock Solutions

	1mg	5mg	10mg
1 mM	1.8434 mL	9.2168 mL	18.4335 mL
5 mM	0.3687 mL	1.8434 mL	3.6867 mL
10 mM	0.1843 mL	0.9217 mL	1.8434 mL
50 mM	0.0369 mL	0.1843 mL	0.3687 mL

Please select the appropriate solvent to prepare the stock solution, according to the solubility of the product in different solvents. Please use it as soon as possible.

Note: The dilution table applies only to solid products. For liquid products, please calculate the stock solution based on the stated concentration and/or density.

Reference

Lin YL, Wu CF, Huang YT. Phenols from the roots of *Rheum palmatum* attenuate chemotaxis in rat hepatic stellate cells. *Planta Med.* 2008 Aug;74(10):1246-52. doi: 10.1055/s-2008-1074581. Epub 2008 Jul 8. PMID: 18612943.

Abe I, Seki T, Noguchi H, Kashiwada Y. Galloyl esters from rhubarb are potent inhibitors of squalene epoxidase, a key enzyme in cholesterol biosynthesis. *Planta Med.* 2000 Dec;66(8):753-6. doi: 10.1055/s-2000-9781. PMID: 11199136.

**Inhibitor · Natural Compounds · Compound Libraries · Recombinant Proteins**

This product is for Research Use Only · Not for Human or Veterinary or Therapeutic Use

Tel:781-999-4286 E\_mail:info@targetmol.com Address:34 Washington Street,Wellesley Hills,MA 02481