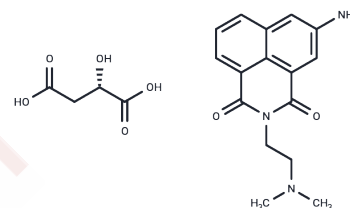


Amonafide L-malate

Chemical Properties

CAS No. :	618863-54-0
Formula:	C ₂₀ H ₂₃ N ₃ O ₇
Molecular Weight:	417.41
Storage:	Powder: -20°C for 3 years In solvent: -80°C for 1 year Actual storage temperature shall be subject to the COA.



Biological Description

Description	Amonafide L-malate is the malate salt of amonafide, an imide derivative of naphthalic acid, with potential antineoplastic activity. Amonafide intercalates into DNA and inhibits topoisomerase II, resulting in DNA double-strand breaks (DSB) and inhibition of DNA replication and RNA synthesis.
Targets(IC50)	Others

Preparing Stock Solutions

	1mg	5mg	10mg
1 mM	2.3957 mL	11.9786 mL	23.9573 mL
5 mM	0.4791 mL	2.3957 mL	4.7915 mL
10 mM	0.2396 mL	1.1979 mL	2.3957 mL
50 mM	0.0479 mL	0.2396 mL	0.4791 mL

Please select the appropriate solvent to prepare the stock solution, according to the solubility of the product in different solvents. Please use it as soon as possible.

Note: The dilution table applies only to solid products. For liquid products, please calculate the stock solution based on the stated concentration and/or density.

Inhibitor · Natural Compounds · Compound Libraries · Recombinant Proteins

This product is for Research Use Only · Not for Human or Veterinary or Therapeutic Use

Tel:781-999-4286 E_mail:info@targetmol.com Address:34 Washington Street,Wellesley Hills,MA 02481