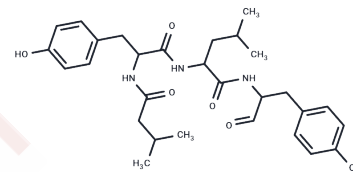


## Tyrostatin

## Chemical Properties

CAS No. :	121024-51-9
Formula:	C <sub>29</sub> H <sub>39</sub> N <sub>3</sub> O <sub>6</sub>
Molecular Weight:	525.64
Storage:	Powder: -20°C for 3 years   In solvent: -80°C for 1 year Actual storage temperature shall be subject to the COA.



## Biological Description

Description	Tyrostatin is a new pepstatin-insensitive carboxyl proteinases peptide proteinase inhibitor isolated from Kitasatosporia.
Targets(IC50)	Others

## Preparing Stock Solutions

	1mg	5mg	10mg
1 mM	1.9024 mL	9.5122 mL	19.0244 mL
5 mM	0.3805 mL	1.9024 mL	3.8049 mL
10 mM	0.1902 mL	0.9512 mL	1.9024 mL
50 mM	0.038 mL	0.1902 mL	0.3805 mL

Please select the appropriate solvent to prepare the stock solution, according to the solubility of the product in different solvents. Please use it as soon as possible.

Note: The dilution table applies only to solid products. For liquid products, please calculate the stock solution based on the stated concentration and/or density.

## Reference

- Wlodawer A, Li M, Gustchina A, Dauter Z, Uchida K, Oyama H, Goldfarb NE, Dunn BM, Oda K. Inhibitor complexes of the Pseudomonas serine-carboxyl proteinase. *Biochemistry*. 2001 Dec 25;40(51):15602-11. PubMed PMID: 11747435.
- Ito M, Dunn BM, Oda K. Substrate specificities of pepstatin-insensitive carboxyl proteinases from gram-negative bacteria. *J Biochem*. 1996 Oct;120(4):845-50. PubMed PMID: 8947851.
- Ito M, Narutaki S, Uchida K, Oda K. Identification of carboxyl residues in pepstatin-insensitive carboxyl proteinase from Pseudomonas sp. 101 that participate in catalysis and substrate binding. *J Biochem*. 1999 Jan;125(1):210-6. PubMed PMID: 9880819.
- Oda K, Nakatani H, Dunn BM. Substrate specificity and kinetic properties of pepstatin-insensitive carboxyl proteinase from Pseudomonas sp. No. 101. *Biochim Biophys Acta*. 1992 Apr 8;1120(2):208-14. PubMed PMID: 1562589.

**Inhibitor · Natural Compounds · Compound Libraries · Recombinant Proteins**

This product is for Research Use Only · Not for Human or Veterinary or Therapeutic Use

Tel:781-999-4286 E\_mail:info@targetmol.com Address:34 Washington Street,Wellesley Hills,MA 02481