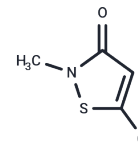
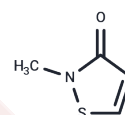


Methylchloroisothiazolinone/Methylisothiazolinone Mixture

Chemical Properties

CAS No. :	55965-84-9
Formula:	C ₈ H ₉ ClN ₂ O ₂ S ₂
Molecular Weight:	264.75
Storage:	High Volatility Powder: -20°C for 3 years In solvent: -80°C for 1 year <small>Actual storage temperature shall be subject to the COA.</small>



Biological Description

Description	Methylchloroisothiazolinone/Methylisothiazolinone Mixture (Kathon 886MW) is an isothiazolinone preservative that is widely used in cosmetics to inhibit the growth of bacteria, yeasts, and fungi, while potentially causing contact skin sensitization. Methylisothiazolinone activates matrix metalloproteinases (MMPs) in human bronchial epithelial cells to induce apoptosis and inflammation.
Targets(IC50)	MMP, Antibacterial, Antifungal

Preparing Stock Solutions

	1mg	5mg	10mg
1 mM	3.7771 mL	18.8857 mL	37.7715 mL
5 mM	0.7554 mL	3.7771 mL	7.5543 mL
10 mM	0.3777 mL	1.8886 mL	3.7771 mL
50 mM	0.0755 mL	0.3777 mL	0.7554 mL

Please select the appropriate solvent to prepare the stock solution, according to the solubility of the product in different solvents. Please use it as soon as possible.

Note: The dilution table applies only to solid products. For liquid products, please calculate the stock solution based on the stated concentration and/or density.

Reference

Lorente-Lavirgen AI, et al. Methylchloroisothiazolinone / methylisothiazolinone: epidemiological retrospective study. *Eur Ann Allergy Clin Immunol.* 2019 May 15;51(3):131-134.

Springle W R. Evaluation of latex paint preservatives: comparative method and a quantitative treatment of bacterial behavior in paint test systems[J]. *Industrial & Engineering Chemistry Product Research and Development*, 1983, 22(1): 61-67.

de Groot A C, et al. Kathon® CG: cosmetic allergy and patch test sensitization[J]. *Contact dermatitis*, 1985, 12(2): 76-80.

Inhibitor · Natural Compounds · Compound Libraries · Recombinant Proteins

This product is for Research Use Only · Not for Human or Veterinary or Therapeutic Use

Tel:781-999-4286 E_mail:info@targetmol.com Address:34 Washington Street,Wellesley Hills,MA 02481