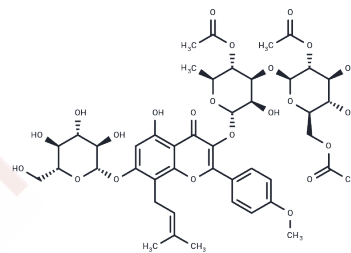


Epimedin K

Chemical Properties

CAS No. :	174286-13-6
Formula:	C ₄₅ H ₅₆ O ₂₃
Molecular Weight:	964.91
Storage:	Powder: -20°C for 3 years In solvent: -80°C for 1 year Actual storage temperature shall be subject to the COA.



Biological Description

Description	Epimedin K is a natural product from Epimedium koreanum NAKAI (Berberidaceae).
Targets(IC50)	Others

Preparing Stock Solutions

	1mg	5mg	10mg
1 mM	1.0364 mL	5.1818 mL	10.3637 mL
5 mM	0.2073 mL	1.0364 mL	2.0727 mL
10 mM	0.1036 mL	0.5182 mL	1.0364 mL
50 mM	0.0207 mL	0.1036 mL	0.2073 mL

Please select the appropriate solvent to prepare the stock solution, according to the solubility of the product in different solvents. Please use it as soon as possible.

Note: The dilution table applies only to solid products. For liquid products, please calculate the stock solution based on the stated concentration and/or density.

Inhibitor · Natural Compounds · Compound Libraries · Recombinant Proteins

This product is for Research Use Only · Not for Human or Veterinary or Therapeutic Use

Tel: 781-999-4286 E_mail: info@targetmol.com Address: 34 Washington Street, Wellesley Hills, MA 02481