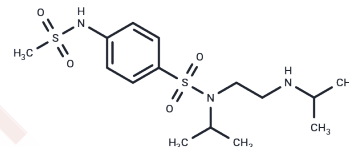


Risotilide

Chemical Properties

CAS No. :	120688-08-6
Formula:	C ₁₅ H ₂₇ N ₃ O ₄ S ₂
Molecular Weight:	377.52
Storage:	Powder: -20°C for 3 years In solvent: -80°C for 1 year Actual storage temperature shall be subject to the COA.



Biological Description

Description	Risotilide is a voltage-dependent potassium channel inhibitor. It can prolong cardiac action potentials and refractory periods.
Targets(IC50)	Neprilysin,Others

Preparing Stock Solutions

	1mg	5mg	10mg
1 mM	2.6489 mL	13.2443 mL	26.4887 mL
5 mM	0.5298 mL	2.6489 mL	5.2977 mL
10 mM	0.2649 mL	1.3244 mL	2.6489 mL
50 mM	0.053 mL	0.2649 mL	0.5298 mL

Please select the appropriate solvent to prepare the stock solution, according to the solubility of the product in different solvents. Please use it as soon as possible.

Note: The dilution table applies only to solid products. For liquid products, please calculate the stock solution based on the stated concentration and/or density.

Reference

- Hewett KW, Le FK, Martin KL, Brasington CR, Piecuch S, Case CL. Changes in atrioventricular conduction properties with refractory-period modulation. *J Cardiovasc Pharmacol*. 1996 Dec;28(6):824-32. PubMed PMID: 8961081.
- McLarnon JG, Wang XP. Actions of cardiac drugs on a calcium-dependent potassium channel in hippocampal neurons. *Mol Pharmacol*. 1991 Apr;39(4):540-6. PubMed PMID: 2017153.
- Kowey PR, Friechling TD, Sewter J, Wu Y, Sokil A, Paul J, Nocella J. Electrophysiological effects of left ventricular hypertrophy. Effect of calcium and potassium channel blockade. *Circulation*. 1991 Jun;83(6):2067-75. PubMed PMID: 1645624.
- Burckhardt BC, Gögelein H. Small and maxi K⁺ channels in the basolateral membrane of isolated crypts from rat distal colon: single-channel and slow whole-cell recordings. *Pflugers Arch*. 1992 Jan;420(1):54-60. PubMed PMID: 1553263.

Inhibitor · Natural Compounds · Compound Libraries · Recombinant Proteins

This product is for Research Use Only · Not for Human or Veterinary or Therapeutic Use

Tel:781-999-4286 E_mail:info@targetmol.com Address:34 Washington Street,Wellesley Hills,MA 02481