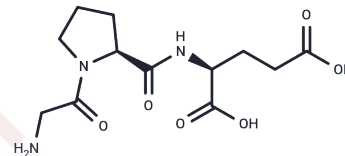


## Glypromate

## Chemical Properties

CAS No. :	32302-76-4
Formula:	C <sub>12</sub> H <sub>19</sub> N <sub>3</sub> O <sub>6</sub>
Molecular Weight:	301.3
Storage:	Keep away from moisture Powder: -20°C for 3 years   In solvent: -80°C for 1 year <small>Actual storage temperature shall be subject to the COA.</small>



## Biological Description

Description	Glypromate (Gly-Pro-Glu) is a neuroprotective agent, is a weak NMDA receptor agonist
Targets(IC50)	NMDAR,iGluR
In vivo	Glypromate is neuroprotective after central administration in animal models of neurodegenerative processes, such as Huntington's, Parkinson's, Alzheimer's diseases, and varies acute brain injury animal models.

## Solubility Information

Solubility	DMSO: 10 mM, Sonication is recommended. (< 1 mg/ml refers to the product slightly soluble or insoluble)
------------	--

## Preparing Stock Solutions

	1mg	5mg	10mg
1 mM	3.319 mL	16.5948 mL	33.1895 mL
5 mM	0.6638 mL	3.319 mL	6.6379 mL
10 mM	0.3319 mL	1.6595 mL	3.319 mL
50 mM	0.0664 mL	0.3319 mL	0.6638 mL

Please select the appropriate solvent to prepare the stock solution, according to the solubility of the product in different solvents. Please use it as soon as possible.

Note: The dilution table applies only to solid products. For liquid products, please calculate the stock solution based on the stated concentration and/or density.

Reference

Vaaga C E , Tovar K R , Westbrook G L . The IGF-derived tripeptide Gly-Pro-Glu is a weak NMDA receptor agonist[[]].  
Journal of Neurophysiology, 2014, 112(6):1241-1245.

**Inhibitor · Natural Compounds · Compound Libraries · Recombinant Proteins**

This product is for Research Use Only· Not for Human or Veterinary or Therapeutic Use

Tel:781-999-4286 E\_mail:info@targetmol.com Address:34 Washington Street,Wellesley Hills,MA 02481