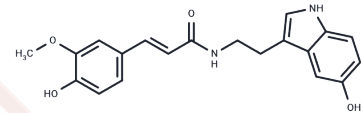


## N-Feruloylserotonin

## Chemical Properties

CAS No. :	68573-23-9
Formula:	C <sub>20</sub> H <sub>20</sub> N <sub>2</sub> O <sub>4</sub>
Molecular Weight:	352.38
Storage:	Keep away from direct sunlight Powder: -20°C for 3 years   In solvent: -80°C for 1 year <small>Actual storage temperature shall be subject to the COA.</small>



## Biological Description

Description	N-Feruloylserotonin ((E/Z)-Moschamine) is a selective FAAH inhibitor that inhibits [H]-AEA uptake and cell proliferation at low concentrations.
Targets(IC50)	Antioxidant
In vitro	N-Feruloylserotonin treatment significantly attenuated these effects on LPS-induced reactive oxygen species, nitric oxide, and prostaglandin E2 production in RAW 264.7 macrophages[1].

## Solubility Information

Solubility	DMSO: 100 mg/mL (283.78 mM), Sonication is recommended. (< 1 mg/ml refers to the product slightly soluble or insoluble)
------------	--

## Preparing Stock Solutions

	1mg	5mg	10mg
1 mM	2.8378 mL	14.1892 mL	28.3785 mL
5 mM	0.5676 mL	2.8378 mL	5.6757 mL
10 mM	0.2838 mL	1.4189 mL	2.8378 mL
50 mM	0.0568 mL	0.2838 mL	0.5676 mL

Please select the appropriate solvent to prepare the stock solution, according to the solubility of the product in different solvents. Please use it as soon as possible.

Note: The dilution table applies only to solid products. For liquid products, please calculate the stock solution based on the stated concentration and/or density.

### Reference

Park CH, et al. N-Feruloylserotonin inhibits lipopolysaccharide-induced inflammation via SIRT1-stimulated FOXO1 and NF- $\kappa$ B signaling pathways in RAW 264.7 cells. *Cell Mol Biol (Noisy-le-grand)*. 2023 Nov 15;69(11):109-115.

Katsuda S, et al. Safflower seed polyphenols (N-(p-coumaroyl)serotonin and N-feruloylserotonin) ameliorate atherosclerosis and distensibility of the aortic wall in Kurosawa and Kusanagi-hypercholesterolemic (KHC) rabbits. *Hypertens Res*. 2009 Nov;32(11):944-9.

**Inhibitor · Natural Compounds · Compound Libraries · Recombinant Proteins**

This product is for Research Use Only · Not for Human or Veterinary or Therapeutic Use

Tel: 781-999-4286    E\_mail: info@targetmol.com    Address: 34 Washington Street, Wellesley Hills, MA 02481