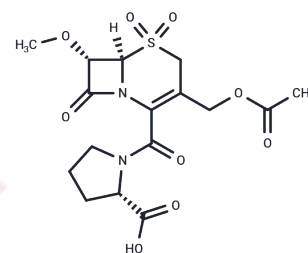


L 658758

Chemical Properties

CAS No. : 116507-04-1
 Formula: C₁₆H₂₀N₂O₉S
 Molecular Weight: 416.4
 Storage: Powder: -20°C for 3 years | In solvent: -80°C for 1 year
 Actual storage temperature shall be subject to the COA.



Biological Description

Description	L 658758 is an inhibitor of serine proteinase.
Targets(IC50)	Others,Serine Protease

Preparing Stock Solutions

	1mg	5mg	10mg
1 mM	2.4015 mL	12.0077 mL	24.0154 mL
5 mM	0.4803 mL	2.4015 mL	4.8031 mL
10 mM	0.2402 mL	1.2008 mL	2.4015 mL
50 mM	0.048 mL	0.2402 mL	0.4803 mL

Please select the appropriate solvent to prepare the stock solution, according to the solubility of the product in different solvents. Please use it as soon as possible.

Note: The dilution table applies only to solid products. For liquid products, please calculate the stock solution based on the stated concentration and/or density.

Reference

- Kawai M, Harada N, Takeyama H, Okajima K. Neutrophil elastase contributes to the development of ischemia/reperfusion-induced liver injury by decreasing the production of insulin-like growth factor-I in rats. *Transl Res.* 2010 Jun;155(6):294-304. doi: 10.1016/j.trsl.2010.02.003. Epub 2010 Mar 19. PubMed PMID: 20478544.
- Harada N, Okajima K, Isobe H. Role of neutrophil elastase in development of pulmonary vascular injury and septic shock in rats. *Shock.* 2008 Oct;30(4):379-87. doi: 10.1097/SHK.0b013e3181673e2c. Erratum in: *Shock.* 2012 Oct;38(4):446. PubMed PMID: 18323746.
- Okajima K, Harada N, Uchiba M, Mori M. Neutrophil elastase contributes to the development of ischemia-reperfusion-induced liver injury by decreasing endothelial production of prostacyclin in rats. *Am J Physiol Gastrointest Liver Physiol.* 2004 Dec;287(6):G1116-23. Epub 2004 Jul 8. PubMed PMID: 15246960.
- Liu W, Okajima K, Murakami K, Harada N, Isobe H, Irie T. Role of neutrophil elastase in stress-induced gastric mucosal injury in rats. *J Lab Clin Med.* 1998 Nov;132(5):432-9. PubMed PMID: 9823937.

Inhibitor · Natural Compounds · Compound Libraries · Recombinant Proteins

This product is for Research Use Only · Not for Human or Veterinary or Therapeutic Use

Tel:781-999-4286 E_mail:info@targetmol.com Address:34 Washington Street,Wellesley Hills,MA 02481