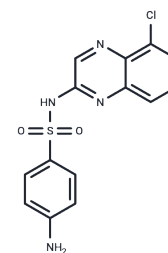


Chloroquinoxaline sulfonamide

Chemical Properties

CAS No. :	97919-22-7
Formula:	C ₁₄ H ₁₁ ClN ₄ O ₂ S
Molecular Weight:	334.78
Storage:	Powder: -20°C for 3 years In solvent: -80°C for 1 year Actual storage temperature shall be subject to the COA.



Biological Description

Description	Chloroquinoxaline sulfonamide (Chloroquinoxaline) is a topoisomerase II alpha/beta toxin with antitumor activity and immunosuppressive properties that inhibits the proliferation of B16 melanoma cells in mice, and can be used to study metastatic colorectal cancer. It can be used to study metastatic colorectal cancer.
Targets(IC50)	Parasite,Molecular Glues,Topoisomerase
In vitro	Chloroquinoxaline sulfonamide-induced protein-DNA cross-links and topoisomerase II-DNA cross-links in CV-1 cells [1]. Chloroquinoxaline sulfonamide inhibits the proliferation of mouse B16 melanoma cells, but only when a relatively high drug concentration (1 mM) is used [2]. The IC50 value of chloroquinoxaline sulfonamide on CV-1 cells was 1.8 mM using MTT cytotoxicity assay.

Solubility Information

Solubility	DMSO: 100 mg/mL (298.7 mM),Sonication is recommended. (< 1 mg/ml refers to the product slightly soluble or insoluble)
In vivo Formulation	10% DMSO+40% PEG300+5% Tween 80+45% Saline: 4 mg/mL (11.95 mM),Sonication is recommended. <i>Please add the solvents sequentially, clarifying the solution as much as possible before adding the next one. Dissolve by heating and/or sonication if necessary. Working solution is recommended to be prepared and used immediately. The formulation provided above is for reference purposes only. In vivo formulations may vary and should be modified based on specific experimental conditions.</i>

Preparing Stock Solutions

	1mg	5mg	10mg
1 mM	2.987 mL	14.9352 mL	29.8704 mL
5 mM	0.5974 mL	2.987 mL	5.9741 mL
10 mM	0.2987 mL	1.4935 mL	2.987 mL
50 mM	0.0597 mL	0.2987 mL	0.5974 mL

Please select the appropriate solvent to prepare the stock solution, according to the solubility of the product in different solvents. Please use it as soon as possible.

Note: The dilution table applies only to solid products. For liquid products, please calculate the stock solution based on the stated concentration and/or density.

Reference

Gao H, et al. Chloroquinoxaline sulfonamide (NSC 339004) is a topoisomerase IIalpha/beta poison. *Cancer Res.* 2000 Nov 1;60(21):5937-40.

Branda RF, et al. Cellular pharmacology of chloroquinoxaline sulfonamide and a related compound in murine B16 melanoma cells. *Biochem Pharmacol.* 1988 Dec 1;37(23):4557-64.

Inhibitor · Natural Compounds · Compound Libraries · Recombinant Proteins

This product is for Research Use Only · Not for Human or Veterinary or Therapeutic Use

Tel:781-999-4286 E_mail:info@targetmol.com Address:34 Washington Street,Wellesley Hills,MA 02481