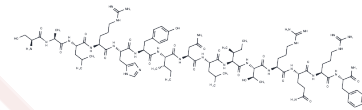


## Neuropeptide Y (22-36)

## Chemical Properties

CAS No. :	119019-65-7
Formula:	C85H139N29O21
Molecular Weight:	1903.19
Storage:	Keep away from moisture Powder: -20°C for 3 years   In solvent: -80°C for 1 year <small>Actual storage temperature shall be subject to the COA.</small>



## Biological Description

Description	Neuropeptide Y (22-36), a 15-amino-acid peptide, is a fragment of Neuropeptide Y (NPY), a 36-amino-acid neuropeptide involved in various physiological and homeostatic processes in the central and peripheral nervous systems. NPY, the most abundant peptide in the mammalian central nervous system, is secreted alongside neurotransmitters such as GABA and glutamate.
Targets(IC50)	Neuropeptide Y Receptor

## Solubility Information

Solubility	H2O: Soluble, ( $< 1$ mg/ml refers to the product slightly soluble or insoluble)
------------	---

## Preparing Stock Solutions

	1mg	5mg	10mg
1 mM	0.5254 mL	2.6272 mL	5.2543 mL
5 mM	0.1051 mL	0.5254 mL	1.0509 mL
10 mM	0.0525 mL	0.2627 mL	0.5254 mL
50 mM	0.0105 mL	0.0525 mL	0.1051 mL

Please select the appropriate solvent to prepare the stock solution, according to the solubility of the product in different solvents. Please use it as soon as possible.

Note: The dilution table applies only to solid products. For liquid products, please calculate the stock solution based on the stated concentration and/or density.

Reference

Hu Y, et al. Identification of a novel hypothalamic neuropeptide Y receptor associated with feeding behavior. J Biol Chem. 1996 Oct 18;271(42):26315-9.

**Inhibitor · Natural Compounds · Compound Libraries · Recombinant Proteins**

This product is for Research Use Only · Not for Human or Veterinary or Therapeutic Use

Tel:781-999-4286 E\_mail:info@targetmol.com Address:34 Washington Street,Wellesley Hills,MA 02481