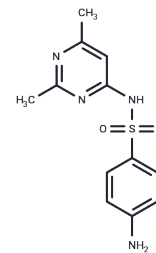


## Sulfisomidin

## Chemical Properties

CAS No. :	515-64-0
Formula:	C <sub>12</sub> H <sub>14</sub> N <sub>4</sub> O <sub>2</sub> S
Molecular Weight:	278.33
Storage:	Store at low temperature Powder: -20°C for 3 years   In solvent: -80°C for 1 year <i>Actual storage temperature shall be subject to the COA.</i>



## Biological Description

Description	Sulfisomidin (Sulfaisodimidine) (Sulfaisodimidine) is a short-acting antibacterial agent.
Targets(IC50)	Antibacterial, Antibiotic
Kinase Assay	The bactericidal activities of OCT and CHG against Staphylococcus aureus are measured by exposing cultures to several different concentrations of each compound for various lengths of time. OCT is diluted from the 5 mM stock solution and tested in phosphate buffer at levels ranging from 0.5 to 5.0 FsM. The test is begun by adding the bacterial culture to the test solution containing OCT or CHG; samples are taken at 5, 15, 30, and 60 min afterward. The inoculum size is approximately 10 <sup>6</sup> CFU/mL[1].

## Solubility Information

Solubility	DMSO: 72.86 mg/mL (261.78 mM), Sonication is recommended. (< 1 mg/ml refers to the product slightly soluble or insoluble)
In vivo Formulation	10% DMSO+90% Saline: 7.29 mg/mL (26.19 mM), Solution. 10% DMSO+40% PEG300+5% Tween 80+45% Saline: 2 mg/mL (7.19 mM), Sonication is recommended. <i>Please add the solvents sequentially, clarifying the solution as much as possible before adding the next one. Dissolve by heating and/or sonication if necessary. Working solution is recommended to be prepared and used immediately. The formulation provided above is for reference purposes only. In vivo formulations may vary and should be modified based on specific experimental conditions.</i>

### Preparing Stock Solutions

---

	<b>1mg</b>	<b>5mg</b>	<b>10mg</b>
1 mM	3.5929 mL	17.9643 mL	35.9286 mL
5 mM	0.7186 mL	3.5929 mL	7.1857 mL
10 mM	0.3593 mL	1.7964 mL	3.5929 mL
50 mM	0.0719 mL	0.3593 mL	0.7186 mL

---

Please select the appropriate solvent to prepare the stock solution, according to the solubility of the product in different solvents. Please use it as soon as possible.

Note: The dilution table applies only to solid products. For liquid products, please calculate the stock solution based on the stated concentration and/or density.

### Reference

Bridges JW, et al. Species differences in the metabolism and excretion of sulphasomidine and sulphamethomidine. *Biochem J.* 1969 Jan;111(2):173-9.

**Inhibitor · Natural Compounds · Compound Libraries · Recombinant Proteins**

This product is for Research Use Only · Not for Human or Veterinary or Therapeutic Use

Tel:781-999-4286 E\_mail:info@targetmol.com Address:34 Washington Street,Wellesley Hills,MA 02481