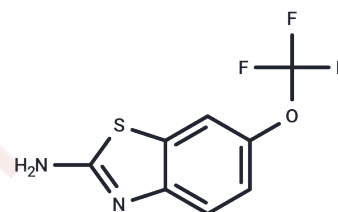


Riluzole

Chemical Properties

CAS No. :	1744-22-5
Formula:	C ₈ H ₅ F ₃ N ₂ O ₂ S
Molecular Weight:	234.2
Storage:	Powder: -20°C for 3 years In solvent: -80°C for 1 year Actual storage temperature shall be subject to the COA.



Biological Description

Description	Riluzole (RP-54274) is a glutamate antagonist (RECEPTORS, GLUTAMATE) used as an anticonvulsant (ANTICONVULSANTS) and to prolong the survival of patients with AMYOTROPHIC LATERAL SCLEROSIS.
Targets(IC50)	GABA Receptor, NMDAR, Sodium Channel
In vitro	Riluzole readily crosses the blood-brain barrier. Treatment of rodents with transient cerebral ischemia with 8 mg/kg i.p. Riluzole completely inhibited the massive release of glutamic acid induced by local ischemia.
In vivo	Riluzole readily crosses the blood-brain barrier. Treatment of rodents with transient cerebral ischemia with 8 mg/kg i.p. Riluzole completely inhibited the massive release of glutamic acid induced by local ischemia.

Solubility Information

Solubility	DMSO: 240 mg/mL (1024.77 mM), Sonication is recommended. H ₂ O: < 1 mg/mL (insoluble or slightly soluble), Ethanol: 43 mg/mL (183.6 mM), Sonication is recommended. (< 1 mg/ml refers to the product slightly soluble or insoluble)
In vivo Formulation	10% DMSO+40% PEG300+5% Tween 80+45% Saline: 5 mg/mL (21.35 mM), Sonication is recommended. <i>Please add the solvents sequentially, clarifying the solution as much as possible before adding the next one. Dissolve by heating and/or sonication if necessary. Working solution is recommended to be prepared and used immediately. The formulation provided above is for reference purposes only. In vivo formulations may vary and should be modified based on specific experimental conditions.</i>

Preparing Stock Solutions

	1mg	5mg	10mg
1 mM	4.2699 mL	21.3493 mL	42.6985 mL
5 mM	0.854 mL	4.2699 mL	8.5397 mL
10 mM	0.427 mL	2.1349 mL	4.2699 mL
50 mM	0.0854 mL	0.427 mL	0.854 mL

Please select the appropriate solvent to prepare the stock solution, according to the solubility of the product in different solvents. Please use it as soon as possible.

Note: The dilution table applies only to solid products. For liquid products, please calculate the stock solution based on the stated concentration and/or density.

Reference

Doble A. Neurology, 1996, 47(6 Suppl 4), S233-241.

B. D. Kretschmer, et al. Naunyn-Schmiedeberg's Archives of Pharmacology August 1998, Volume 358, Issue 2, pp 181-190

Inhibitor · Natural Compounds · Compound Libraries · Recombinant Proteins

This product is for Research Use Only · Not for Human or Veterinary or Therapeutic Use

Tel:781-999-4286 E_mail:info@targetmol.com Address:34 Washington Street,Wellesley Hills,MA 02481