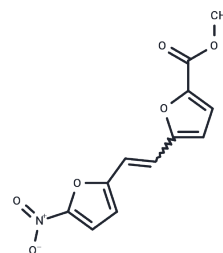


GRK2 Inhibitor

Chemical Properties

| | |
|-------------------|---|
| CAS No. : | 24269-96-3 |
| Formula: | C ₁₂ H ₉ NO ₆ |
| Molecular Weight: | 263.2 |
| Storage: | Powder: -20°C for 3 years In solvent: -80°C for 1 year Actual storage temperature shall be subject to the COA. |



Biological Description

| | |
|---------------|--|
| Description | GRK2 Inhibitor is an effective GRK2 inhibitor. It enhances GPCR signaling by preventing receptor desensitization, used for heart failure and cardiovascular remodeling research. |
| Targets(IC50) | GRK |
| In vitro | GRK2 Inhibitor (CMPD101) blocks agonist-induced smooth muscle contractions [3].; Locostatin induces death in CLL cells [2]. |
| In vivo | Modulating GRK2 levels with GRK2 Inhibitor alters sensitization in rat pain models; low GRK2 underlies hyperalgesic priming [1]. |

Solubility Information

| | |
|------------|--|
| Solubility | DMSO: 33 mg/mL (125.38 mM),Sonication is recommended. (< 1 mg/ml refers to the product slightly soluble or insoluble) |
|------------|--|

Preparing Stock Solutions

| | 1mg | 5mg | 10mg |
|-------|-----------|-----------|------------|
| 1 mM | 3.7994 mL | 18.997 mL | 37.9939 mL |
| 5 mM | 0.7599 mL | 3.7994 mL | 7.5988 mL |
| 10 mM | 0.3799 mL | 1.8997 mL | 3.7994 mL |
| 50 mM | 0.076 mL | 0.3799 mL | 0.7599 mL |

Please select the appropriate solvent to prepare the stock solution, according to the solubility of the product in different solvents. Please use it as soon as possible.

Note: The dilution table applies only to solid products. For liquid products, please calculate the stock solution based on the stated concentration and/or density.

Reference

An S, et al. Small-molecule PROTACs: An emerging and promising approach for the development of targeted therapy drugs. *EBioMedicine*. 2018 Oct;36:553-562.

Crassini K, Pyke T, Shen Y, Stevenson WS, Christopherson RI, Mulligan SP, Best OG. Inhibition of the Raf-1 kinase inhibitory protein (RKIP) by locostatin induces cell death and reduces the CXCR4-mediated migration of chronic lymphocytic leukemia cells. *Leuk Lymphoma*. 2018 Jun 18:1-12. doi: 10.1080/10428194.2018.1455974. [Epub ahead of print] PubMed PMID: 29911936.

Yu Q, Gratzke C, Wang Y, Herlemann A, Strittmatter F, Rutz B, Stief CG, Hennenberg M. Inhibition of prostatic smooth muscle contraction by the inhibitor of G protein-coupled receptor kinase 2/3, CMPD101. *Eur J Pharmacol*. 2018 Jul 15;831:9-19. doi: 10.1016/j.ejphar.2018.04.022. Epub 2018 Apr 23. PubMed PMID: 29698717.

Im YN, Lee YD, Park JS, Kim HK, Im SY, Song HR, Lee HK, Han MK. GPCR Kinase (GRK)-2 Is a Key Negative Regulator of Itch: L-Glutamine Attenuates Itch via a Rapid Induction of GRK2 in an ERK-Dependent Way. *J Invest Dermatol*. 2018 Mar 9. pii: S0022-202X(18)30220-3. doi: 10.1016/j.jid.2018.02.036. [Epub ahead of print] PubMed PMID: 29530536.

Inhibitor · Natural Compounds · Compound Libraries · Recombinant Proteins

This product is for Research Use Only · Not for Human or Veterinary or Therapeutic Use

Tel:781-999-4286 E_mail:info@targetmol.com Address:34 Washington Street,Wellesley Hills,MA 02481