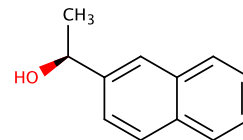


(S)-1-(beta-Naphthyl)ethanol

Chemical Properties

CAS No. :	27544-18-9
Formula:	C ₁₂ H ₁₂ O
Molecular Weight:	172.227
Storage:	Powder: -20°C for 3 years In solvent: -80°C for 1 year Actual storage temperature shall be subject to the COA.



Biological Description

Description	(S)-1-(beta-Naphthyl)ethanol, with CAS No. 27544-18-9, is a fragment molecule that serves as an important scaffold for molecular linking, expansion, and modification. (S)-1-(beta-Naphthyl)ethanol provides a structural basis and research tool for the design and screening of novel drug candidates, and is commonly used in drug discovery, drug synthesis, and related research.
-------------	--

Preparing Stock Solutions

	1mg	5mg	10mg
1 mM	5.8062 mL	29.0309 mL	58.0619 mL
5 mM	1.1612 mL	5.8062 mL	11.6124 mL
10 mM	0.5806 mL	2.9031 mL	5.8062 mL
50 mM	0.1161 mL	0.5806 mL	1.1612 mL

Please select the appropriate solvent to prepare the stock solution, according to the solubility of the product in different solvents. Please use it as soon as possible.

Note: The dilution table applies only to solid products. For liquid products, please calculate the stock solution based on the stated concentration and/or density.

Inhibitor · Natural Compounds · Compound Libraries · Recombinant Proteins

This product is for Research Use Only · Not for Human or Veterinary or Therapeutic Use

Tel: 781-999-4286 E_mail: info@targetmol.com Address: 34 Washington Street, Wellesley Hills, MA 02481