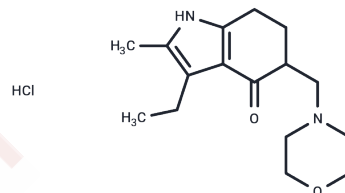


Molindone hydrochloride

Chemical Properties

CAS No. :	15622-65-8
Formula:	C ₁₆ H ₂₄ N ₂ O ₂ ·HCl
Molecular Weight:	312.84
Storage:	Powder: -20°C for 3 years In solvent: -80°C for 1 year Actual storage temperature shall be subject to the COA.



Biological Description

Description	Molindone hydrochloride (EN-1733A) is an indole derivative effective in treating schizophrenia and other psychoses by blocking dopamine's effects in the brain.
Targets(IC50)	5-HT Receptor, AChR, Dopamine Receptor

Solubility Information

Solubility	DMSO: 50 mg/mL (159.83 mM), Sonication is recommended. (< 1 mg/ml refers to the product slightly soluble or insoluble)
------------	---

Preparing Stock Solutions

	1mg	5mg	10mg
1 mM	3.1965 mL	15.9826 mL	31.9652 mL
5 mM	0.6393 mL	3.1965 mL	6.393 mL
10 mM	0.3197 mL	1.5983 mL	3.1965 mL
50 mM	0.0639 mL	0.3197 mL	0.6393 mL

Please select the appropriate solvent to prepare the stock solution, according to the solubility of the product in different solvents. Please use it as soon as possible.

Note: The dilution table applies only to solid products. For liquid products, please calculate the stock solution based on the stated concentration and/or density.

Reference

Nguyen TV, Juorio AV. Naunyn Schmiedebergs Arch Pharmacol. 1989 Oct;340(4):366-71.

Inhibitor · Natural Compounds · Compound Libraries · Recombinant Proteins

This product is for Research Use Only · Not for Human or Veterinary or Therapeutic Use

Tel:781-999-4286 E_mail:info@targetmol.com Address:34 Washington Street,Wellesley Hills,MA 02481