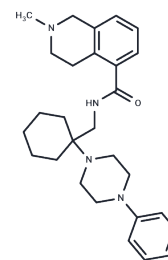


JNJ-42253432

Chemical Properties

CAS No. :	1428327-35-8
Formula:	C ₂₈ H ₃₈ N ₄ O
Molecular Weight:	446.63
Storage:	Powder: -20°C for 3 years In solvent: -80°C for 1 year Actual storage temperature shall be subject to the COA.



Biological Description

Description	JNJ-42253432 is an oral active P2X7 antagonist capable of penetrating the central nervous system with a pKi value of 9.1 for rat and 7.9 for human P2X7 channels.
Targets(IC50)	P2X Receptor

Solubility Information

Solubility	DMSO: 90 mg/mL (201.51 mM),Sonication is recommended. (< 1 mg/ml refers to the product slightly soluble or insoluble)
In vivo Formulation	10% DMSO+40% PEG300+5% Tween 80+45% Saline: 3.3 mg/mL (7.39 mM),Sonication is recommended. <i>Please add the solvents sequentially, clarifying the solution as much as possible before adding the next one. Dissolve by heating and/or sonication if necessary. Working solution is recommended to be prepared and used immediately. The formulation provided above is for reference purposes only. In vivo formulations may vary and should be modified based on specific experimental conditions.</i>

Preparing Stock Solutions

	1mg	5mg	10mg
1 mM	2.239 mL	11.1949 mL	22.3899 mL
5 mM	0.4478 mL	2.239 mL	4.478 mL
10 mM	0.2239 mL	1.1195 mL	2.239 mL
50 mM	0.0448 mL	0.2239 mL	0.4478 mL

Please select the appropriate solvent to prepare the stock solution, according to the solubility of the product in different solvents. Please use it as soon as possible.

Note: The dilution table applies only to solid products. For liquid products, please calculate the stock solution based on the stated concentration and/or density.

Reference

Brian Lord.et al.Pharmacology of a novel central nervous system-penetrant P2X7 antagonist JNJ-42253432.J
Pharmacol Exp Ther. 2014 Dec;351(3):628-41.

Inhibitor · Natural Compounds · Compound Libraries · Recombinant Proteins

This product is for Research Use Only· Not for Human or Veterinary or Therapeutic Use

Tel:781-999-4286 E_mail:info@targetmol.com Address:34 Washington Street,Wellesley Hills,MA 02481