

PD-1/PD-L1-IN-25

Chemical Properties

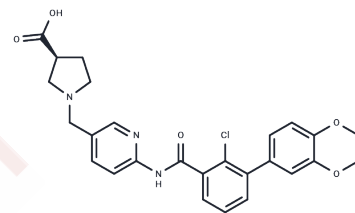
CAS No. : 2768759-52-8

Formula: C₂₆H₂₄ClN₃O₅

Molecular Weight: 493.94

Storage: Powder: -20°C for 3 years | In solvent: -80°C for 1 year

Actual storage temperature shall be subject to the COA.



Biological Description

Description	PD-1/PD-L1-IN-25, an inhibitor of PD-1/PD-L1 interaction (IC ₅₀ : 16.17 nM), effectively activates anti-tumor immunity in T cells within PBMCs and can be utilized in cancer research.
Targets(IC ₅₀)	Others,PD-1/PD-L1

Preparing Stock Solutions

	1mg	5mg	10mg
1 mM	2.0245 mL	10.1227 mL	20.2454 mL
5 mM	0.4049 mL	2.0245 mL	4.0491 mL
10 mM	0.2025 mL	1.0123 mL	2.0245 mL
50 mM	0.0405 mL	0.2025 mL	0.4049 mL

Please select the appropriate solvent to prepare the stock solution, according to the solubility of the product in different solvents. Please use it as soon as possible.

Note: The dilution table applies only to solid products. For liquid products, please calculate the stock solution based on the stated concentration and/or density.

Inhibitor · Natural Compounds · Compound Libraries · Recombinant Proteins

This product is for Research Use Only · Not for Human or Veterinary or Therapeutic Use

Tel:781-999-4286 E_mail:info@targetmol.com Address:34 Washington Street,Wellesley Hills,MA 02481