

C2 Ceramide

Chemical Properties

CAS No. : 3102-57-6

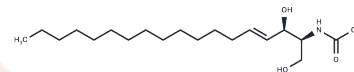
Formula: C₂₀H₃₉NO₃

Molecular Weight: 341.53

Store at low temperature

Storage: Powder: -20°C for 3 years | In solvent: -80°C for 1 year

Actual storage temperature shall be subject to the COA.



Biological Description

Description	A potent modulator of cell proliferation and differentiation.
Targets(IC50)	Apoptosis,Others,Mitochondrial Metabolism,Autophagy,Phosphatase
In vitro	Activates protein phosphatase-1 (PP1) and -2A (PP2A), as well as ceramide-activated protein phosphatase (CAPP) in vitro.

Solubility Information

Solubility	DMSO: 4.4 mg/mL (12.88 mM),Sonication is recommended. (< 1 mg/ml refers to the product slightly soluble or insoluble)
------------	--

Preparing Stock Solutions

	1mg	5mg	10mg
1 mM	2.928 mL	14.640 mL	29.280 mL
5 mM	0.5856 mL	2.928 mL	5.856 mL
10 mM	0.2928 mL	1.464 mL	2.928 mL
50 mM	0.0586 mL	0.2928 mL	0.5856 mL

Please select the appropriate solvent to prepare the stock solution, according to the solubility of the product in different solvents. Please use it as soon as possible.

Note: The dilution table applies only to solid products. For liquid products, please calculate the stock solution based on the stated concentration and/or density.

Inhibitor · Natural Compounds · Compound Libraries · Recombinant Proteins

This product is for Research Use Only · Not for Human or Veterinary or Therapeutic Use

Tel:781-999-4286 E_mail:info@targetmol.com Address:34 Washington Street,Wellesley Hills,MA 02481