

## LY 344864 hydrochloride

## Chemical Properties

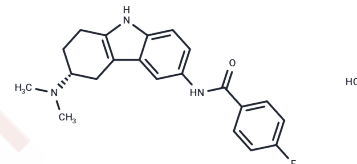
CAS No. : 1217756-94-9

Formula: C<sub>21</sub>H<sub>23</sub>ClFN<sub>3</sub>O

Molecular Weight: 387.88

Storage: Powder: -20°C for 3 years | In solvent: -80°C for 1 year

Actual storage temperature shall be subject to the COA.



## Biological Description

Description	LY 344864 hydrochloride is a selective receptor agonist with an affinity of 6 nM (K <sub>i</sub> ) at the 5-HT <sub>1F</sub> receptor.
Targets(IC <sub>50</sub> )	Others,5-HT Receptor,Adrenergic Receptor
In vitro	LY344864 is a selective 5-HT <sub>1F</sub> receptor agonist with an affinity of 6 nM (K <sub>i</sub> ). It possesses little affinity for the 56 other serotonergic and non-serotonergic neuronal binding sites examined. When examined for its ability to inhibit forskolin-induced cyclic AMP accumulation in cells stably transfected with human 5-HT <sub>1F</sub> receptors, LY344864 is shown to be a full agonist producing an effect similar in magnitude to serotonin itself [1].
In vivo	After an intravenous dose of 1 mg/kg, rat plasma LY344864 levels decrease over time, whereas brain cortex levels remain relatively constant for the first 6 hours after injection. Oral and intravenous LY344864 administration potently inhibit dural protein extravasation caused by electrical stimulation of the trigeminal ganglion in rats [1]. Co-injection of LY 344864 and systemically ineffective doses of METH significantly decreases preference scores and the rewarding properties of METH during the reinstatement phase. In addition, administration of LY 344864 has no effect on the acquisition of CPP in rats [2].

### Preparing Stock Solutions

---

	<b>1mg</b>	<b>5mg</b>	<b>10mg</b>
1 mM	2.5781 mL	12.8906 mL	25.7812 mL
5 mM	0.5156 mL	2.5781 mL	5.1562 mL
10 mM	0.2578 mL	1.2891 mL	2.5781 mL
50 mM	0.0516 mL	0.2578 mL	0.5156 mL

---

Please select the appropriate solvent to prepare the stock solution, according to the solubility of the product in different solvents. Please use it as soon as possible.

Note: The dilution table applies only to solid products. For liquid products, please calculate the stock solution based on the stated concentration and/or density.

**Inhibitor · Natural Compounds · Compound Libraries · Recombinant Proteins**

This product is for Research Use Only · Not for Human or Veterinary or Therapeutic Use

Tel:781-999-4286 E\_mail:info@targetmol.com Address:34 Washington Street,Wellesley Hills,MA 02481