

SLU-PP-332

Chemical Properties

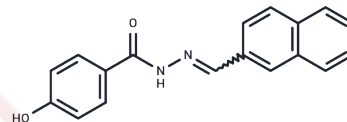
CAS No. : 303760-60-3

Formula: C₁₈H₁₄N₂O₂

Molecular Weight: 290.32

Storage: Powder: -20°C for 3 years | In solvent: -80°C for 1 year

Actual storage temperature shall be subject to the COA.



Biological Description

Description	SLU-PP-332 is a pan-estrogen receptor-related receptor (ERR) agonist with high affinity for ERR α , ERR β , and ERR γ , exhibiting EC ₅₀ values of 98, 230, and 430 nM, respectively. SLU-PP-332 enhances mitochondrial function and cellular respiration, increases type IIa oxidized skeletal muscle fibers, and enhances exercise tolerance in skeletal muscle cell lines. It has potential applications in the study of metabolic diseases, improvement of muscle function, and amelioration of metabolic disorders and aging.
Targets(IC50)	Estrogen Receptor/ERR, Estrogen/progestogen Receptor

Solubility Information

Solubility	DMSO: 83.33 mg/mL (287.03 mM), Sonication is recommended. (< 1 mg/ml refers to the product slightly soluble or insoluble)
In vivo Formulation	10% DMSO+40% PEG300+5% Tween 80+45% Saline: 2 mg/mL (6.89 mM), Sonication is recommended. <i>Please add the solvents sequentially, clarifying the solution as much as possible before adding the next one. Dissolve by heating and/or sonication if necessary. Working solution is recommended to be prepared and used immediately. The formulation provided above is for reference purposes only. In vivo formulations may vary and should be modified based on specific experimental conditions.</i>

Preparing Stock Solutions

	1mg	5mg	10mg
1 mM	3.4445 mL	17.2224 mL	34.4448 mL
5 mM	0.6889 mL	3.4445 mL	6.889 mL
10 mM	0.3444 mL	1.7222 mL	3.4445 mL
50 mM	0.0689 mL	0.3444 mL	0.6889 mL

Please select the appropriate solvent to prepare the stock solution, according to the solubility of the product in different solvents. Please use it as soon as possible.

Note: The dilution table applies only to solid products. For liquid products, please calculate the stock solution based on the stated concentration and/or density.

Inhibitor · Natural Compounds · Compound Libraries · Recombinant Proteins

This product is for Research Use Only · Not for Human or Veterinary or Therapeutic Use

Tel:781-999-4286 E_mail:info@targetmol.com Address:34 Washington Street,Wellesley Hills,MA 02481