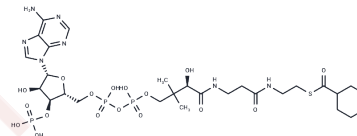


## Cyclohexanoyl Coenzyme A

## Chemical Properties

CAS No. :	5960-12-3
Formula:	C <sub>28</sub> H <sub>46</sub> N <sub>7</sub> O <sub>17</sub> P <sub>3</sub> S
Molecular Weight:	877.69
Storage:	Powder: -20°C for 3 years   In solvent: -80°C for 1 year Actual storage temperature shall be subject to the COA.



## Biological Description

Description	Cyclohexanoyl coenzyme A (CHCoA) is an acyl CoA that contains a cyclohexane group. It is the activated form of cyclohexane carboxylic acid (CHC) in <i>R. palustris</i> . CHC is converted to CHCoA by a succinyl-CoA CHC CoA transferase, and CHCoA is then degraded by a dehydrogenase. CHCoA is converted to hippuric acid in submitochondrial fractions isolated from guinea pig liver.
Targets(IC50)	Others,Endogenous Metabolite

## Solubility Information

Solubility	PBS (pH 7.2): 10 mg/mL (11.39 mM),Sonication is recommended. (< 1 mg/ml refers to the product slightly soluble or insoluble)
------------	---

## Preparing Stock Solutions

	1mg	5mg	10mg
1 mM	1.1394 mL	5.6968 mL	11.3935 mL
5 mM	0.2279 mL	1.1394 mL	2.2787 mL
10 mM	0.1139 mL	0.5697 mL	1.1394 mL
50 mM	0.0228 mL	0.1139 mL	0.2279 mL

Please select the appropriate solvent to prepare the stock solution, according to the solubility of the product in different solvents. Please use it as soon as possible.

Note: The dilution table applies only to solid products. For liquid products, please calculate the stock solution based on the stated concentration and/or density.

Inhibitor · Natural Compounds · Compound Libraries · Recombinant Proteins

This product is for Research Use Only· Not for Human or Veterinary or Therapeutic Use

Tel:781-999-4286 E\_mail:info@targetmol.com Address:34 Washington Street,Wellesley Hills,MA 02481