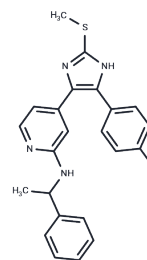


ML 3403

## Chemical Properties

CAS No. : 549505-65-9  
 Formula: C<sub>23</sub>H<sub>21</sub>FN<sub>4</sub>S  
 Molecular Weight: 404.5  
 Storage: Powder: -20°C for 3 years | In solvent: -80°C for 1 year  
 Actual storage temperature shall be subject to the COA.



## Biological Description

Description	p38 MAPK inhibitor (IC <sub>50</sub> = 0.38 μM). Inhibits the release of IL-1β and TNF-α in a peripheral blood mononuclear cell (PBMC) assay (IC <sub>50</sub> values are 0.039 and 0.16 μM respectively).
Targets(IC <sub>50</sub> )	Others,p38 MAPK

## Solubility Information

Solubility	DMSO: Soluble (< 1 mg/ml refers to the product slightly soluble or insoluble)
------------	----------------------------------------------------------------------------------

## Preparing Stock Solutions

	1mg	5mg	10mg
1 mM	2.4722 mL	12.3609 mL	24.7219 mL
5 mM	0.4944 mL	2.4722 mL	4.9444 mL
10 mM	0.2472 mL	1.2361 mL	2.4722 mL
50 mM	0.0494 mL	0.2472 mL	0.4944 mL

Please select the appropriate solvent to prepare the stock solution, according to the solubility of the product in different solvents. Please use it as soon as possible.

Note: The dilution table applies only to solid products. For liquid products, please calculate the stock solution based on the stated concentration and/or density.

## Reference

- Laufer et al (2003) Novel substituted pyridinyl imidazoles as potent anticytokine agents with low activity against hepatic cytochrome P450 enzymes. J.Med.Chem. 46 3230 PMID:12852754  
 Kammerer et al (2007) Pharmacokinetics of ML3403 ([4-[5-(4-fluorophenyl)-2-methylsulfanyl-3H-imidazol-4-yl]-pyridin-2-yl]-(1-phenylethyl)-amine), a 4-pyridinylimidazole-type p38 mitogen-activated protein kinase inhibitor. Drug Metab.Dispos. 35 875 PMID:17344341

**Inhibitor · Natural Compounds · Compound Libraries · Recombinant Proteins**

This product is for Research Use Only · Not for Human or Veterinary or Therapeutic Use

Tel:781-999-4286 E\_mail:info@targetmol.com Address:34 Washington Street,Wellesley Hills,MA 02481