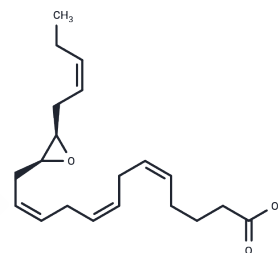


(±)14(15)-EpETE**Chemical Properties**

CAS No. :	131339-24-7
Formula:	C ₂₀ H ₃₀ O ₃
Molecular Weight:	318.45
Storage:	Store at low temperature Powder: -20°C for 3 years In solvent: -80°C for 1 year <small>Actual storage temperature shall be subject to the COA.</small>

**Biological Description**

Description	(±)14(15)-EpETE, an eicosatetraenoic acid derivative containing an epoxy group, is an intestinal microbial lipid metabolite that attenuates cisplatin chemotherapy-induced nausea and vomiting in rats by inhibiting Substance P release through targeting GCG/PKA signaling and is commonly used to study inflammation and metabolism.
Targets(IC50)	Endogenous Metabolite, Neurokinin receptor, Cytochromes P450

Solubility Information

Solubility	DMSO: 10 mg/mL (31.4 mM), Sonication is recommended. PBS (pH 7.2): 1 mg/mL (3.14 mM), Sonication is recommended. Ethanol: 10 mg/mL (31.4 mM), Sonication is recommended. DMF: 10 mg/mL (31.4 mM), Sonication is recommended. (< 1 mg/ml refers to the product slightly soluble or insoluble)
------------	-------------------------------------------------------------------------------------------------------------------------------------------------------------------------------------------------------------------------------------------------------------------------------------------------------------

Preparing Stock Solutions

	1mg	5mg	10mg
1 mM	3.1402 mL	15.7011 mL	31.4021 mL
5 mM	0.628 mL	3.1402 mL	6.2804 mL
10 mM	0.314 mL	1.5701 mL	3.1402 mL
50 mM	0.0628 mL	0.314 mL	0.628 mL

Please select the appropriate solvent to prepare the stock solution, according to the solubility of the product in different solvents. Please use it as soon as possible.

Note: The dilution table applies only to solid products. For liquid products, please calculate the stock solution based on the stated concentration and/or density.

Reference

Maude Fer , et al. Metabolism of eicosapentaenoic and docosahexaenoic acids by recombinant human cytochromes P450. Arch Biochem Biophys. 2008, 471, 2.

Inhibitor · Natural Compounds · Compound Libraries · Recombinant Proteins

This product is for Research Use Only· Not for Human or Veterinary or Therapeutic Use

Tel:781-999-4286 E_mail:info@targetmol.com Address:34 Washington Street,Wellesley Hills,MA 02481