

Xylenolblue

Chemical Properties

CAS No. : 125-31-5

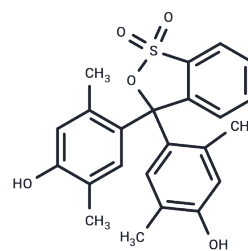
Formula: C₂₃H₂₂O₅S

Molecular Weight: 410.48

Keep away from direct sunlight

Storage: Powder: -20°C for 3 years | In solvent: -80°C for 1 year

Actual storage temperature shall be subject to the COA.



Biological Description

Description	Xylenolblue (p-Xylenol Blue) is an acid-base indicator used as an intermediate in chemical synthesis.
Targets(IC50)	Others
In vitro	<p>1. Application of acid-base indicators pH range: Below pH 8.0, the solution is yellow. In the pH range of 8.0 to 9.6, the color transitions to purple-red. Above pH 9.6, the solution is blue. How to use: 1. Prepare Xylenol Blue indicator solution (common concentration is 0.04% to 0.1% w/v, dissolved in ethanol or water). 2. Add the indicator solution to the sample to be tested (recommended dosage is 1-2 drops per 10 mL sample). 3. Observe the color change and determine the pH value by comparing the color with the standard pH colorimetric card.</p> <p>2. Application in chemical synthesis How to use: 1. Add Xylenol Blue to the synthesis system according to the needs of the target reaction, and control the concentration and reaction conditions. 2. Under appropriate conditions (such as light, heat or catalyst), induce chemical reactions to produce target products.</p> <p>The above information is based on published literature. Experimental procedures should be appropriately modified to meet specific research demands.</p>

Preparing Stock Solutions

	1mg	5mg	10mg
1 mM	2.4362 mL	12.1809 mL	24.3617 mL
5 mM	0.4872 mL	2.4362 mL	4.8723 mL
10 mM	0.2436 mL	1.2181 mL	2.4362 mL
50 mM	0.0487 mL	0.2436 mL	0.4872 mL

Please select the appropriate solvent to prepare the stock solution, according to the solubility of the product in different solvents. Please use it as soon as possible.

Note: The dilution table applies only to solid products. For liquid products, please calculate the stock solution based on the stated concentration and/or density.

Reference

Cohen A. Xylenol Blue: And its proposed use as a new and improved indicator in Chemical and Biochemical work. *Biochem J.* 1922;16(1):31-4.

Okoduwa SI, et al. Comparative Analysis of the Properties of Acid-Base Indicator of Rose (*Rosa setigera*), Allamanda (*Allamanda cathartica*), and Hibiscus (*Hibiscus rosa-sinensis*) Flowers. *Biochem Res Int.* 2015;2015: 381721.

Inhibitor · Natural Compounds · Compound Libraries · Recombinant Proteins

This product is for Research Use Only · Not for Human or Veterinary or Therapeutic Use

Tel:781-999-4286 E_mail:info@targetmol.com Address:34 Washington Street,Wellesley Hills,MA 02481