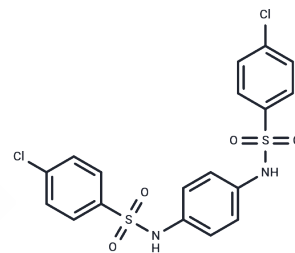


hiCE inhibitor-1

Chemical Properties

CAS No. :	2654-68-4
Formula:	C ₁₈ H ₁₄ Cl ₂ N ₂ O ₄ S ₂
Molecular Weight:	457.35
Storage:	Powder: -20°C for 3 years In solvent: -80°C for 1 year Actual storage temperature shall be subject to the COA.



Biological Description

Description	hiCE inhibitor-1 is a sulfonamide derivative that is a selective human intestinal enzyme (hiCE) inhibitor with a K_i value of 53.3 nM. hiCE inhibitor-1 can be used to improve Irinotecan-induced diarrhoea [1].
Targets(IC50)	Others,Cholinesterase (ChE)

Preparing Stock Solutions

	1mg	5mg	10mg
1 mM	2.1865 mL	10.9325 mL	21.8651 mL
5 mM	0.4373 mL	2.1865 mL	4.373 mL
10 mM	0.2187 mL	1.0933 mL	2.1865 mL
50 mM	0.0437 mL	0.2187 mL	0.4373 mL

Please select the appropriate solvent to prepare the stock solution, according to the solubility of the product in different solvents. Please use it as soon as possible.

Note: The dilution table applies only to solid products. For liquid products, please calculate the stock solution based on the stated concentration and/or density.

Inhibitor · Natural Compounds · Compound Libraries · Recombinant Proteins

This product is for Research Use Only · Not for Human or Veterinary or Therapeutic Use

Tel:781-999-4286 E_mail:info@targetmol.com Address:34 Washington Street,Wellesley Hills,MA 02481