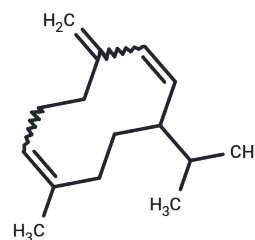


## (Rac)-Germacrene D

## Chemical Properties

CAS No. :	37839-63-7
Formula:	C <sub>15</sub> H <sub>24</sub>
Molecular Weight:	204.36
Storage:	Powder: -20°C for 3 years   In solvent: -80°C for 1 year Actual storage temperature shall be subject to the COA.



## Biological Description

Description	Germacrene D, a natural essential oil, has antioxidant activity and cytotoxicity on tumor cells.
Targets(IC50)	Antibacterial, Antifungal

## Solubility Information

Solubility	DMSO: Soluble, ( $< 1$ mg/ml refers to the product slightly soluble or insoluble)
------------	--

## Preparing Stock Solutions

	1mg	5mg	10mg
1 mM	4.8933 mL	24.4666 mL	48.9333 mL
5 mM	0.9787 mL	4.8933 mL	9.7867 mL
10 mM	0.4893 mL	2.4467 mL	4.8933 mL
50 mM	0.0979 mL	0.4893 mL	0.9787 mL

Please select the appropriate solvent to prepare the stock solution, according to the solubility of the product in different solvents. Please use it as soon as possible.

Note: The dilution table applies only to solid products. For liquid products, please calculate the stock solution based on the stated concentration and/or density.

### Reference

Noge K, Shimizu N, Becerra JX. (R)-(-)-linalyl acetate and (S)-(-)-germacrene D from the leaves of Mexican *Bursera linanoe*. *Nat Prod Commun*. 2010 Mar;5(3):351-4. PubMed PMID: 20420305.

Noge K, Becerra JX. Germacrene D, a common sesquiterpene in the genus *Bursera* (Burseraceae). *Molecules*. 2009 Dec 15;14(12):5289-97. doi: 10.3390/molecules14125289. PubMed PMID: 20032892.

Setzer WN. Germacrene D cyclization: an Ab initio investigation. *Int J Mol Sci*. 2008 Jan;9(1):89-97. Epub 2008 Jan 25. PubMed PMID: 19325722; PubMed Central PMCID: PMC2635598.

Picaud S, Olsson ME, Brodelius M, Brodelius PE. Cloning, expression, purification and characterization of recombinant (+)-germacrene D synthase from *Zingiber officinale*. *Arch Biochem Biophys*. 2006 Aug 1;452(1):17-28. Epub 2006 Jun 21. PubMed PMID: 16839518.

**Inhibitor · Natural Compounds · Compound Libraries · Recombinant Proteins**

This product is for Research Use Only · Not for Human or Veterinary or Therapeutic Use

Tel:781-999-4286 E\_mail:info@targetmol.com Address:34 Washington Street,Wellesley Hills,MA 02481