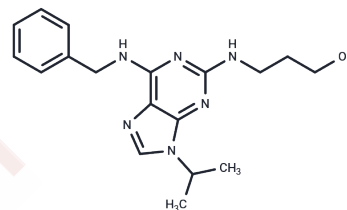


Bohemine

Chemical Properties

CAS No. :	189232-42-6
Formula:	C ₁₈ H ₂₄ N ₆ O
Molecular Weight:	340.42
Storage:	Powder: -20°C for 3 years In solvent: -80°C for 1 year Actual storage temperature shall be subject to the COA.



Biological Description

Description	Bohemine is a cyclin-dependent kinase inhibitor.
Targets(IC50)	ERK,CDK

Solubility Information

Solubility	DMSO: 50 mg/mL (146.88 mM),Sonication is recommended. (< 1 mg/ml refers to the product slightly soluble or insoluble)
In vivo Formulation	10% DMSO+40% PEG300+5% Tween 80+45% Saline: 2 mg/mL (5.88 mM),Sonication is recommended. <i>Please add the solvents sequentially, clarifying the solution as much as possible before adding the next one. Dissolve by heating and/or sonication if necessary. Working solution is recommended to be prepared and used immediately. The formulation provided above is for reference purposes only. In vivo formulations may vary and should be modified based on specific experimental conditions.</i>

Preparing Stock Solutions

	1mg	5mg	10mg
1 mM	2.9375 mL	14.6877 mL	29.3755 mL
5 mM	0.5875 mL	2.9375 mL	5.8751 mL
10 mM	0.2938 mL	1.4688 mL	2.9375 mL
50 mM	0.0588 mL	0.2938 mL	0.5875 mL

Please select the appropriate solvent to prepare the stock solution, according to the solubility of the product in different solvents. Please use it as soon as possible.

Note: The dilution table applies only to solid products. For liquid products, please calculate the stock solution based on the stated concentration and/or density.

Reference

Liskova B, et al. Chem Res Toxicol. 2012 Feb 20;25(2):500-9.

Ou J, Li H, Qiu P, et al. CDK9 modulates circadian clock by attenuating REV-ERB α activity. Biochemical and Biophysical Research Communications. 2019 Jun 11;513(4):967-973

Ou J, Li H, Qiu P, et al. CDK9 modulates circadian clock by attenuating REV-ERB α activity[J]. Biochemical and biophysical research communications. 2019 Jun 11;513(4):967-973.

Inhibitor · Natural Compounds · Compound Libraries · Recombinant Proteins

This product is for Research Use Only· Not for Human or Veterinary or Therapeutic Use

Tel:781-999-4286 E_mail:info@targetmol.com Address:34 Washington Street,Wellesley Hills,MA 02481