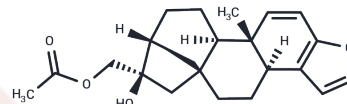


Kahweol Acetate

Chemical Properties

CAS No. :	81760-47-6
Formula:	C ₂₂ H ₂₈ O ₄
Molecular Weight:	356.46
Storage:	Powder: -20°C for 3 years In solvent: -80°C for 1 year Actual storage temperature shall be subject to the COA.



Biological Description

Description	Kahweol Acetate is a semi-synthetic derivative of kahweol, a natural product found in coffee beans. It exhibits a wide variety of biological activities, including inhibiting RANKL-induced osteoclast generation, inducing cell cycle arrest and apoptosis in oral squamous cell carcinoma cells, preventing aflatoxin B1 induced DNA adduct formation, and suppressing H ₂ O ₂ -induced DNA damage and oxidative stress.
Targets(IC50)	Apoptosis,Others

Preparing Stock Solutions

	1mg	5mg	10mg
1 mM	2.8054 mL	14.0268 mL	28.0536 mL
5 mM	0.5611 mL	2.8054 mL	5.6107 mL
10 mM	0.2805 mL	1.4027 mL	2.8054 mL
50 mM	0.0561 mL	0.2805 mL	0.5611 mL

Please select the appropriate solvent to prepare the stock solution, according to the solubility of the product in different solvents. Please use it as soon as possible.

Note: The dilution table applies only to solid products. For liquid products, please calculate the stock solution based on the stated concentration and/or density.

Inhibitor · Natural Compounds · Compound Libraries · Recombinant Proteins

This product is for Research Use Only · Not for Human or Veterinary or Therapeutic Use

Tel:781-999-4286 E_mail:info@targetmol.com Address:34 Washington Street,Wellesley Hills,MA 02481