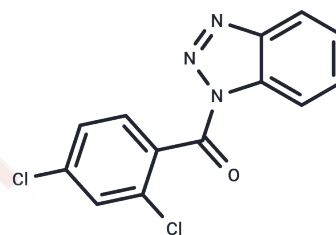


ITSA-1

Chemical Properties

| | |
|-------------------|---|
| CAS No. : | 200626-61-5 |
| Formula: | C ₁₃ H ₇ Cl ₂ N ₃ O |
| Molecular Weight: | 292.12 |
| Storage: | Powder: -20°C for 3 years In solvent: -80°C for 1 year Actual storage temperature shall be subject to the COA. |



Biological Description

| | |
|---------------|---|
| Description | ITSA-1 is membrane permeable and specifically suppresses TSA inhibition of HDAC (histone deacetylase), but shows no activity towards other HDAC inhibitors. |
| Targets(IC50) | HDAC |
| Cell Research | A549 cells (75% confluent) in 10-cm dishes are treated with DMSO (0.1%), TSA (500 nM), or tubacin (2 μM) for 4.5 h, and then either DMSO (0.1%) or ITSA1 (50 μM) is added for an additional 17.5 h. Samples are rinsed in PBS, trypsinized, and fixed for 2 h in 70% ethanol 30% PBS (4°C). Cells then are washed once in PBS and stored overnight in PBS (4°C).(Only for Reference) |

Solubility Information

| | |
|---------------------|--|
| Solubility | DMSO: 100 mg/mL (342.33 mM),Sonication is recommended. H ₂ O: < 1 mg/mL (insoluble or slightly soluble), Ethanol: 5 mg/mL (17.12 mM),Sonication is recommended. (< 1 mg/ml refers to the product slightly soluble or insoluble) |
| In vivo Formulation | 10% DMSO+40% PEG300+5% Tween 80+45% Saline: 2 mg/mL (6.85 mM),Sonication is recommended. <i>Please add the solvents sequentially, clarifying the solution as much as possible before adding the next one. Dissolve by heating and/or sonication if necessary. Working solution is recommended to be prepared and used immediately. The formulation provided above is for reference purposes only. In vivo formulations may vary and should be modified based on specific experimental conditions.</i> |

Preparing Stock Solutions

| | 1mg | 5mg | 10mg |
|-------|------------|------------|-------------|
| 1 mM | 3.4233 mL | 17.1163 mL | 34.2325 mL |
| 5 mM | 0.6847 mL | 3.4233 mL | 6.8465 mL |
| 10 mM | 0.3423 mL | 1.7116 mL | 3.4233 mL |
| 50 mM | 0.0685 mL | 0.3423 mL | 0.6847 mL |

Please select the appropriate solvent to prepare the stock solution, according to the solubility of the product in different solvents. Please use it as soon as possible.

Note: The dilution table applies only to solid products. For liquid products, please calculate the stock solution based on the stated concentration and/or density.

Reference

Koeller KM, et al. Chem Biol. 2003 May;10(5):397-410.

Inhibitor · Natural Compounds · Compound Libraries · Recombinant Proteins

This product is for Research Use Only · Not for Human or Veterinary or Therapeutic Use

Tel:781-999-4286 E_mail:info@targetmol.com Address:34 Washington Street,Wellesley Hills,MA 02481