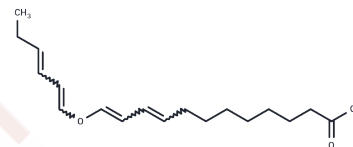


## Etherolenic Acid

## Chemical Properties

CAS No. :	2247927-22-4
Formula:	C <sub>18</sub> H <sub>28</sub> O <sub>3</sub>
Molecular Weight:	292.419
Storage:	Powder: -20°C for 3 years   In solvent: -80°C for 1 year Actual storage temperature shall be subject to the COA.



## Biological Description

Description	Etherolenic acid is a divinyl ether oxylipin. It is a metabolite of linolenic acid that is formed in plants via 13-lipoxygenase-mediated formation of 13(S)-HpOTrE followed by conversion to the divinyl ether by divinyl ether synthase.
Targets(IC50)	Others, Drug Metabolite

## Solubility Information

Solubility	Ethanol: Soluble (< 1 mg/ml refers to the product slightly soluble or insoluble)
------------	---

## Preparing Stock Solutions

	1mg	5mg	10mg
1 mM	3.4197 mL	17.0987 mL	34.1974 mL
5 mM	0.6839 mL	3.4197 mL	6.8395 mL
10 mM	0.342 mL	1.7099 mL	3.4197 mL
50 mM	0.0684 mL	0.342 mL	0.6839 mL

Please select the appropriate solvent to prepare the stock solution, according to the solubility of the product in different solvents. Please use it as soon as possible.

Note: The dilution table applies only to solid products. For liquid products, please calculate the stock solution based on the stated concentration and/or density.

## Reference

- Grechkin, A.N., Fazliev, F.N., and Mukhtarova, L.S. The lipoxygenase pathway in garlic (*Allium sativum* L.) bulbs: Detection of the novel divinyl ether oxylipins *FEBS Letters* 371:159-162 (1995)
- Hamberg, M. Biosynthesis of new divinyl ether oxylipins in Ranunculus plants *Lipids* 37(4):427-433 (2002)

**Inhibitor · Natural Compounds · Compound Libraries · Recombinant Proteins**

This product is for Research Use Only · Not for Human or Veterinary or Therapeutic Use

Tel:781-999-4286 E\_mail:info@targetmol.com Address:34 Washington Street,Wellesley Hills,MA 02481