

Acetyl-pepstatin

Chemical Properties

CAS No. : 11076-29-2

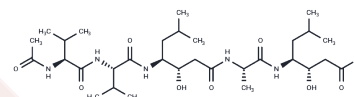
Formula: C₃₁H₅₇N₅O₉

Molecular Weight: 643.81

Keep away from moisture

Storage: Powder: -20°C for 3 years | In solvent: -80°C for 1 year

Actual storage temperature shall be subject to the COA.



Biological Description

Description	Streptomyces pepsin inhibitor is used as a pepsin inhibitor.
Targets(IC50)	HIV Protease

Preparing Stock Solutions

	1mg	5mg	10mg
1 mM	1.5533 mL	7.7663 mL	15.5325 mL
5 mM	0.3107 mL	1.5533 mL	3.1065 mL
10 mM	0.1553 mL	0.7766 mL	1.5533 mL
50 mM	0.0311 mL	0.1553 mL	0.3107 mL

Please select the appropriate solvent to prepare the stock solution, according to the solubility of the product in different solvents. Please use it as soon as possible.

Note: The dilution table applies only to solid products. For liquid products, please calculate the stock solution based on the stated concentration and/or density.

Reference

- Kitagishi K, Nakatani H, Hiromi K. Static and kinetic studies on the binding between pepsin and Streptomyces pepsin inhibitor with a fluorescent probe. *J Biochem.* 1980 Feb;87(2):573-9. PubMed PMID: 6766932.
- Nakatani H, Tsuchiya M, Morita T, Ohki S, Hiromi K. Binding of Streptomyces pepsin inhibitor (acetyl-pepstatin) with chymosin (Rennin). *Biochim Biophys Acta.* 1980 Jul 10;614(1):144-50. PubMed PMID: 6772226.
- Nakatani H, Hiromi K, Kitagishi K. Kinetic study on the interaction of *Rhizopus chinensis* aspartic protease with Streptomyces pepsin inhibitor (acetylpepstatin). *Arch Biochem Biophys.* 1988 Jun;263(2):311-4. PubMed PMID: 3288122.
- Sun Y, Takada K, Nogi Y, Okada S, Matsunaga S. Lower homologues of ahpantin, aspartic protease inhibitors, from a marine Streptomyces sp. *J Nat Prod.* 2014 Jul 25;77(7):1749-52. doi: 10.1021/np500337m. Epub 2014 Jun 24. PubMed PMID: 24960234.

Inhibitor · Natural Compounds · Compound Libraries · Recombinant Proteins

This product is for Research Use Only · Not for Human or Veterinary or Therapeutic Use

Tel:781-999-4286 E_mail:info@targetmol.com Address:34 Washington Street,Wellesley Hills,MA 02481