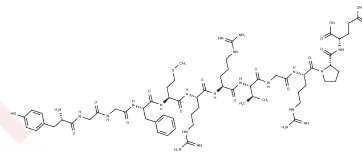


Bam 12P

Chemical Properties

CAS No. :	75513-71-2
Formula:	C ₆₂ H ₉₇ N ₂₁ O ₁₆ S
Molecular Weight:	1424.64
Storage:	Keep away from moisture Powder: -20°C for 3 years In solvent: -80°C for 1 year <small>Actual storage temperature shall be subject to the COA.</small>



Biological Description

Description	Bam 12P is a Pro-Met-enkephalin precursor that is isolated from the bovine adrenal medulla.
Targets(IC50)	Opioid Receptor, CXCR

Solubility Information

Solubility	DMSO: Soluble, (< 1 mg/ml refers to the product slightly soluble or insoluble)
------------	--

Preparing Stock Solutions

	1mg	5mg	10mg
1 mM	0.7019 mL	3.5097 mL	7.0193 mL
5 mM	0.1404 mL	0.7019 mL	1.4039 mL
10 mM	0.0702 mL	0.351 mL	0.7019 mL
50 mM	0.014 mL	0.0702 mL	0.1404 mL

Please select the appropriate solvent to prepare the stock solution, according to the solubility of the product in different solvents. Please use it as soon as possible.

Note: The dilution table applies only to solid products. For liquid products, please calculate the stock solution based on the stated concentration and/or density.

Reference

Akhmedov NA, Tagiev ZG, Gasanov EM, Makhmudova TA. [Spatial structure of BAM-12P dodecapeptide and its analogues]. *Bioorg Khim.* 2005 May-Jun;31(3):245-50. Russian. PubMed PMID: 16004382.

Jeohn GH, Matsuzaki H, Takahashi K. Purification and characterization of a detergent-requiring membrane-bound metalloendopeptidase from porcine brain. *Eur J Biochem.* 1999 Mar;260(2):318-24. PubMed PMID: 10095765.

Morita S, Fukase M, Yamaguchi M, Morita Y. Substrate specificity of a novel serine protease from soybean [Glycine max (L.) Merrill]. *J Biochem.* 1996 Jun;119(6):1094-9. PubMed PMID: 8827443.

Medeiros MS, Iazigi N, Camargo AC, Oliveira EB. Distribution and properties of endo-oligopeptidases A and B in the human neuroendocrine system. *J Endocrinol.* 1992 Dec;135(3):579-88. PubMed PMID: 1487709.

Inhibitor · Natural Compounds · Compound Libraries · Recombinant Proteins

This product is for Research Use Only · Not for Human or Veterinary or Therapeutic Use

Tel:781-999-4286 E_mail:info@targetmol.com Address:34 Washington Street,Wellesley Hills,MA 02481