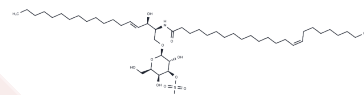


C24:1 3'-sulfo galactosylceramide (d18:1/24:1(15z))

Chemical Properties

CAS No. :	151057-28-2
Formula:	C48H91NO11S
Molecular Weight:	890.3
Storage:	Store at low temperature Powder: -20°C for 3 years In solvent: -80°C for 1 year <small>Actual storage temperature shall be subject to the COA.</small>



Biological Description

Description	C24:1 3'-sulfo galactosylceramide (d18:1/24:1(15z)) is the predominant sulfate analog in the mature myelin sheath. C24:1 3'-sulfo Galactosylceramide (d18:1/24:1(15Z)) interacted with C-type lectin and immunoglobulin-like receptors to give the highest affinity for LMIR5. Galactosylceramide (d18:1/24:1(15Z)) induces MCP-1 production by basophils, which activates NFAT by increasing LMIR5, but not mast cells. C24:1 3'-sulfo Galactosylceramide (d18:1/24:1(15Z)) binds in vitro to CD1d binding and increased the proliferation of free mouse splenocytes.
Targets(IC50)	Others
In vitro	The relationship between structure and activity (SAR) of newly synthesized sulfatide isoforms C24:1 was evaluated. The basal IDO1 expression was significantly increased by C24:1 sulfatide (+87 ± 7% and +50 ± 5% at 1µM, respectively) over negative controls ; These effects functionally correlated with changes in IDO1 activity: l-kynurenine contents in the culture media were significantly increased by C24:1 sulfatide (+61 ± 8% and +48 ± 4% at 1µM, respectively) over negative controls.[2]

Solubility Information

Solubility	Chloroform:Methanol (5:1): Soluble (< 1 mg/ml refers to the product slightly soluble or insoluble)
------------	---

Preparing Stock Solutions

	1mg	5mg	10mg
1 mM	1.1232 mL	5.6161 mL	11.2322 mL
5 mM	0.2246 mL	1.1232 mL	2.2464 mL
10 mM	0.1123 mL	0.5616 mL	1.1232 mL
50 mM	0.0225 mL	0.1123 mL	0.2246 mL

Please select the appropriate solvent to prepare the stock solution, according to the solubility of the product in different solvents. Please use it as soon as possible.

Note: The dilution table applies only to solid products. For liquid products, please calculate the stock solution based on the stated concentration and/or density.

Reference

Moyano AL, et al. Levels of plasma sulfatides C18 : 0 and C24 : 1 correlate with disease status in relapsing-remitting multiple sclerosis. *J Neurochem.* 2013 ; 127(5):600-604.

Altomare E, et al. Synthetic isoforms of endogenous sulfatides differently modulate indoleamine 2,3-dioxygenase in antigen presenting cells. *Life Sci.* 2011 ; 89(5-6):176-181.

Inhibitor · Natural Compounds · Compound Libraries · Recombinant Proteins

This product is for Research Use Only · Not for Human or Veterinary or Therapeutic Use

Tel:781-999-4286 E_mail:info@targetmol.com Address:34 Washington Street,Wellesley Hills,MA 02481