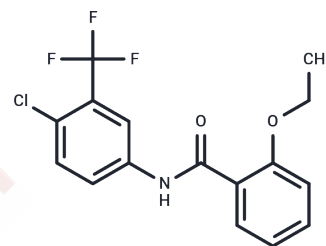


CTB

## Chemical Properties

CAS No. : 451491-47-7  
 Formula: C<sub>16</sub>H<sub>13</sub>ClF<sub>3</sub>NO<sub>2</sub>  
 Molecular Weight: 343.73  
 Storage: Powder: -20°C for 3 years | In solvent: -80°C for 1 year  
 Actual storage temperature shall be subject to the COA.



## Biological Description

Description	CTB is an effective small-molecule activator of the p300/CBP histone acetyltransferase (HAT) complex. It exerts its effects by altering the structure of the p300 enzyme and can be used to study neuronal autophagy flux and tauopathies.
Targets(IC50)	Apoptosis,Epigenetic Reader Domain,Histone Acetyltransferase

## Solubility Information

Solubility	DMSO: 105 mg/mL (305.47 mM),Sonication is recommended. H <sub>2</sub> O: < 1 mg/mL(insoluble or slightly soluble) Ethanol: 5 mg/mL (14.55 mM),Sonication is recommended. (< 1 mg/ml refers to the product slightly soluble or insoluble)
In vivo Formulation	10% DMSO+40% PEG300+5% Tween 80+45% Saline: 4 mg/mL (11.64 mM),Sonication is recommended. <i>Please add the solvents sequentially, clarifying the solution as much as possible before adding the next one. Dissolve by heating and/or sonication if necessary. Working solution is recommended to be prepared and used immediately. The formulation provided above is for reference purposes only. In vivo formulations may vary and should be modified based on specific experimental conditions.</i>

## Preparing Stock Solutions

	1mg	5mg	10mg
1 mM	2.9093 mL	14.5463 mL	29.0926 mL
5 mM	0.5819 mL	2.9093 mL	5.8185 mL
10 mM	0.2909 mL	1.4546 mL	2.9093 mL
50 mM	0.0582 mL	0.2909 mL	0.5819 mL

Please select the appropriate solvent to prepare the stock solution, according to the solubility of the product in different solvents. Please use it as soon as possible.

Note: The dilution table applies only to solid products. For liquid products, please calculate the stock solution based on the stated concentration and/or density.

### Reference

Mantelingu K, et al. Activation of p300 histone acetyltransferase by small molecules altering enzyme structure: probed by surface-enhanced Raman spectroscopy. *J Phys Chem B*. 2007;111(17):4527-4534.

Chen X, et al. Promoting tau secretion and propagation by hyperactive p300/CBP via autophagy-lysosomal pathway in tauopathy. *Mol Neurodegener*. 2020;15(1):2.

**Inhibitor · Natural Compounds · Compound Libraries · Recombinant Proteins**

This product is for Research Use Only · Not for Human or Veterinary or Therapeutic Use

Tel:781-999-4286 E\_mail:info@targetmol.com Address:34 Washington Street,Wellesley Hills,MA 02481