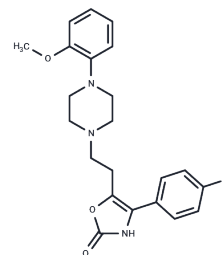


## Zoloperone

## Chemical Properties

CAS No. :	52867-74-0
Formula:	C <sub>22</sub> H <sub>24</sub> N <sub>3</sub> O <sub>3</sub>
Molecular Weight:	397.44
Storage:	Powder: -20°C for 3 years   In solvent: -80°C for 1 year Actual storage temperature shall be subject to the COA.



## Biological Description

Description	Zoloperone is a neuroleptic.
Targets(IC50)	Others

## Preparing Stock Solutions

	1mg	5mg	10mg
1 mM	2.5161 mL	12.5805 mL	25.161 mL
5 mM	0.5032 mL	2.5161 mL	5.0322 mL
10 mM	0.2516 mL	1.2581 mL	2.5161 mL
50 mM	0.0503 mL	0.2516 mL	0.5032 mL

Please select the appropriate solvent to prepare the stock solution, according to the solubility of the product in different solvents. Please use it as soon as possible.

Note: The dilution table applies only to solid products. For liquid products, please calculate the stock solution based on the stated concentration and/or density.

## Reference

Fregnan GB, Chieli T. Classical neuroleptics and deconditioning activity after single or repeated treatment. Role of different cerebral neurotransmitters. *Arzneimittelforschung*. 1980;30(11):1865-70. PubMed PMID: 6109537.

Inhibitor · Natural Compounds · Compound Libraries · Recombinant Proteins

This product is for Research Use Only · Not for Human or Veterinary or Therapeutic Use

Tel:781-999-4286 E\_mail:info@targetmol.com Address:34 Washington Street,Wellesley Hills,MA 02481