

## Esomeprazole hemistrontium

## Chemical Properties

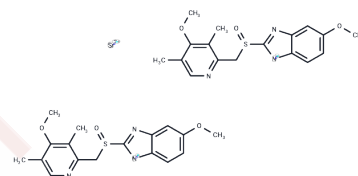
CAS No. : 914613-86-8

Formula: C<sub>34</sub>H<sub>36</sub>N<sub>6</sub>O<sub>6</sub>Sr

Molecular Weight: 776.44

Storage: Powder: -20°C for 3 years | In solvent: -80°C for 1 year

Actual storage temperature shall be subject to the COA.



## Biological Description

Description	Esomeprazole hemistrontium, also known as (S)-Omeprazole, is a potent and orally active proton pump inhibitor that effectively reduces acid secretion by inhibiting the H <sup>+</sup> , K <sup>+</sup> -ATPase in gastric parietal cells. This compound exhibits promising potential for research in symptomatic gastroesophageal reflux disease [1] [2] [3].
Targets(IC50)	Others,Proton pump,Antibacterial
In vitro	Esomeprazole (25-100 μM; 20 hours; MDA-MB-468 cells) treatment suppresses the growth of triple-negative breast cancer cells in vitro in a dose-dependent manner through increased intracellular acidification [1].
In vivo	Esomeprazole administered via oral gavage at doses ranging from 30 to 300 mg/kg daily for 11 to 19 days significantly reduces lung fibrosis progression in C57BL/6J mice subjected to cotton smoke-induced lung injury. Additionally, this treatment lowers markers of inflammation and fibrosis in circulation. This study involved 8-week-old C57BL/6J mice weighing between 25-30 g.

## Preparing Stock Solutions

	1mg	5mg	10mg
1 mM	1.2879 mL	6.4396 mL	12.8793 mL
5 mM	0.2576 mL	1.2879 mL	2.5759 mL
10 mM	0.1288 mL	0.644 mL	1.2879 mL
50 mM	0.0258 mL	0.1288 mL	0.2576 mL

Please select the appropriate solvent to prepare the stock solution, according to the solubility of the product in different solvents. Please use it as soon as possible.

Note: The dilution table applies only to solid products. For liquid products, please calculate the stock solution based on the stated concentration and/or density.

**Inhibitor · Natural Compounds · Compound Libraries · Recombinant Proteins**

This product is for Research Use Only · Not for Human or Veterinary or Therapeutic Use

Tel:781-999-4286 E\_mail:info@targetmol.com Address:34 Washington Street,Wellesley Hills,MA 02481