

CH 5450

## Chemical Properties

CAS No. : 252557-97-4

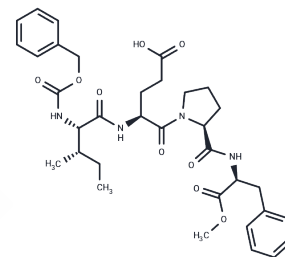
Formula: C<sub>34</sub>H<sub>44</sub>N<sub>4</sub>O<sub>9</sub>

Molecular Weight: 652.73

Keep away from moisture

Storage: Powder: -20°C for 3 years | In solvent: -80°C for 1 year

Actual storage temperature shall be subject to the COA.



## Biological Description

Description	CH 5450 (Z-Ile-Glu-Pro-Phe-Ome) is a short peptide inhibitor of chymase in the human heart.
Targets(IC50)	Others,Proteasome

## Solubility Information

Solubility	DMSO: 43 mg/mL (65.88 mM),Sonication is recommended. (< 1 mg/ml refers to the product slightly soluble or insoluble)
In vivo Formulation	10% DMSO+40% PEG300+5% Tween 80+45% Saline: 2 mg/mL (3.06 mM),Sonication is recommended. <i>Please add the solvents sequentially, clarifying the solution as much as possible before adding the next one. Dissolve by heating and/or sonication if necessary. Working solution is recommended to be prepared and used immediately. The formulation provided above is for reference purposes only. In vivo formulations may vary and should be modified based on specific experimental conditions.</i>

## Preparing Stock Solutions

	1mg	5mg	10mg
1 mM	1.532 mL	7.6601 mL	15.3203 mL
5 mM	0.3064 mL	1.532 mL	3.0641 mL
10 mM	0.1532 mL	0.766 mL	1.532 mL
50 mM	0.0306 mL	0.1532 mL	0.3064 mL

Please select the appropriate solvent to prepare the stock solution, according to the solubility of the product in different solvents. Please use it as soon as possible.

Note: The dilution table applies only to solid products. For liquid products, please calculate the stock solution based on the stated concentration and/or density.

Reference

Bastos M, et al. Inhibitors of human heart chymase based on a peptide library. Proc Natl Acad Sci U S A. 1995 Jul 18;92(15):6738-42.

**Inhibitor · Natural Compounds · Compound Libraries · Recombinant Proteins**

This product is for Research Use Only · Not for Human or Veterinary or Therapeutic Use

Tel:781-999-4286 E\_mail:info@targetmol.com Address:34 Washington Street,Wellesley Hills,MA 02481