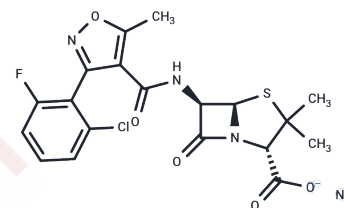


Flucloxacillin sodium

Chemical Properties

CAS No. :	1847-24-1
Formula:	C ₁₉ H ₁₆ ClFN ₃ NaO ₅ S
Molecular Weight:	475.85
Storage:	Powder: -20°C for 3 years In solvent: -80°C for 1 year Actual storage temperature shall be subject to the COA.



Biological Description

Description	Flucloxacillin sodium (floxacillin sodium) is a highly active antibiotic against Gram-negative and Gram-positive bacteria.
Targets(IC50)	Antibacterial, Antibiotic
In vitro	The serum elimination half-life of flucloxacillin is 1.31-1.39 hours, and six hours after administration of a single 250 mg dose the serum concentration of flucloxacillin is 0.46 micrograms/mL. Oral flucloxacillin does not affect sweat electrolytes and is not a contraindication to sweat testing. Flucloxacillin has been reported to be metabolized in man to the penicilloic acid, the antibacterially active 5'-hydroxymethyl derivative and the penicilloic acid of the 5'-hydroxymethyl derivative. The metabolism of flucloxacillin in the rat is similar.

Solubility Information

Solubility	H ₂ O: 199.6 mM, Sonication is recommended. DMSO: 250 mg/mL (525.38 mM), Sonication is recommended. (< 1 mg/ml refers to the product slightly soluble or insoluble)
In vivo Formulation	10% DMSO+40% PEG300+5% Tween 80+45% Saline: 2 mg/mL (4.2 mM), Sonication is recommended. <i>Please add the solvents sequentially, clarifying the solution as much as possible before adding the next one. Dissolve by heating and/or sonication if necessary. Working solution is recommended to be prepared and used immediately. The formulation provided above is for reference purposes only. In vivo formulations may vary and should be modified based on specific experimental conditions.</i>

Preparing Stock Solutions

	1mg	5mg	10mg
1 mM	2.1015 mL	10.5075 mL	21.015 mL
5 mM	0.4203 mL	2.1015 mL	4.203 mL
10 mM	0.2102 mL	1.0508 mL	2.1015 mL
50 mM	0.042 mL	0.2102 mL	0.4203 mL

Please select the appropriate solvent to prepare the stock solution, according to the solubility of the product in different solvents. Please use it as soon as possible.

Note: The dilution table applies only to solid products. For liquid products, please calculate the stock solution based on the stated concentration and/or density.

Reference

Williams J, et al. Sweat tests and flucloxacillin. Arch Dis Child. 1988 Jul;63(7):847-8.

Everett JR, et al. ¹⁹F NMR spectroscopy study of the metabolites of flucloxacillin in rat urine. J Pharm Pharmacol. 1985 Dec;37(12):869-73.

Paton DM, et al. Bioavailability and half-life of two preparations of flucloxacillin. N Z Med J. 1982 Nov 10;95(719):766-8.

Inhibitor · Natural Compounds · Compound Libraries · Recombinant Proteins

This product is for Research Use Only · Not for Human or Veterinary or Therapeutic Use

Tel:781-999-4286 E_mail:info@targetmol.com Address:34 Washington Street,Wellesley Hills,MA 02481