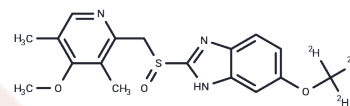


Omeprazole-d3

Chemical Properties

CAS No. :	922731-01-9
Formula:	C17H19N3O3S
Molecular Weight:	348.44
Storage:	Powder: -20°C for 3 years In solvent: -80°C for 1 year Actual storage temperature shall be subject to the COA.



Biological Description

Description	Omeprazole-d3 is a stable deuterated derivative of omeprazole. Omeprazole is a selective proton pump inhibitor (PPI) used in research related to gastrointestinal diseases. Omeprazole inhibits the proliferation and adhesion of Helicobacter pylori and disrupts the stability of the bacterial cell membrane. Omeprazole inhibits the growth of both Gram-positive and Gram-negative bacteria.
Targets(IC50)	Proton pump, Antibacterial, Autophagy

Solubility Information

Solubility	DMSO: 100 mg/mL (286.99 mM), Sonication is recommended. (< 1 mg/ml refers to the product slightly soluble or insoluble)
------------	--

Preparing Stock Solutions

	1mg	5mg	10mg
1 mM	2.8699 mL	14.3497 mL	28.6993 mL
5 mM	0.574 mL	2.8699 mL	5.7399 mL
10 mM	0.287 mL	1.435 mL	2.8699 mL
50 mM	0.0574 mL	0.287 mL	0.574 mL

Please select the appropriate solvent to prepare the stock solution, according to the solubility of the product in different solvents. Please use it as soon as possible.

Note: The dilution table applies only to solid products. For liquid products, please calculate the stock solution based on the stated concentration and/or density.

Reference

Li XQ, et al. Comparison of inhibitory effects of the proton pump-inhibiting drugs omeprazole, esomeprazole, lansoprazole, pantoprazole, and rabeprazole on human cytochrome P450 activities. *Drug Metab Dispos.* 2004 Aug;32(8):821-7.

Jonkers D, et al. Omeprazole inhibits growth of gram-positive and gram-negative bacteria including *Helicobacter pylori* in vitro. *J Antimicrob Chemother.* 1996 Jan;37(1):145-50.

Inhibitor · Natural Compounds · Compound Libraries · Recombinant Proteins

This product is for Research Use Only · Not for Human or Veterinary or Therapeutic Use

Tel:781-999-4286 E_mail:info@targetmol.com Address:34 Washington Street,Wellesley Hills,MA 02481