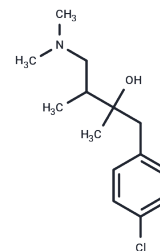


Clobutinol

Chemical Properties

CAS No. :	14860-49-2
Formula:	C ₁₄ H ₂₂ ClNO
Molecular Weight:	255.78
Storage:	Powder: -20°C for 3 years In solvent: -80°C for 1 year Actual storage temperature shall be subject to the COA.



Biological Description

Description	Clobutinol has anti-tussive effects. Clobutinol affects heart rate and blood pressure, it can be used for cough related research [1] [2] [3].
Targets(IC50)	Others,Potassium Channel
In vitro	Clobutinol markedly suppresses the voltage-gated outward current in cells expressing hERG at a concentration of 10 μ M [1]. Furthermore, in hERG transfected cells, clobutinol (0-1000 μ M) inhibits this outward current, demonstrating an IC 50 value of 1.9 μ M [1].
In vivo	Clobutinol, administered intravenously at doses ranging from 1-20 mg/kg, was found to have no significant impact on the airways of anesthetized guinea pigs. However, at doses of 1 and 10 mg/kg, clobutinol influenced the cardiovascular system, notably decreasing heart rate and mean blood pressure in anesthetized closed-chest guinea pigs. This effect was more pronounced with the higher dosage of 10 mg/kg, indicating a dose-dependent response on cardiovascular parameters without affecting the respiratory system.

Preparing Stock Solutions

	1mg	5mg	10mg
1 mM	3.9096 mL	19.548 mL	39.0961 mL
5 mM	0.7819 mL	3.9096 mL	7.8192 mL
10 mM	0.391 mL	1.9548 mL	3.9096 mL
50 mM	0.0782 mL	0.391 mL	0.7819 mL

Please select the appropriate solvent to prepare the stock solution, according to the solubility of the product in different solvents. Please use it as soon as possible.

Note: The dilution table applies only to solid products. For liquid products, please calculate the stock solution based on the stated concentration and/or density.

Inhibitor · Natural Compounds · Compound Libraries · Recombinant Proteins

This product is for Research Use Only · Not for Human or Veterinary or Therapeutic Use

Tel:781-999-4286 E_mail:info@targetmol.com Address:34 Washington Street,Wellesley Hills,MA 02481